

Infrastructure networks range guide



Contents

PHILMAC ● 4

Fittings & valves for safe transfer, control & application of water

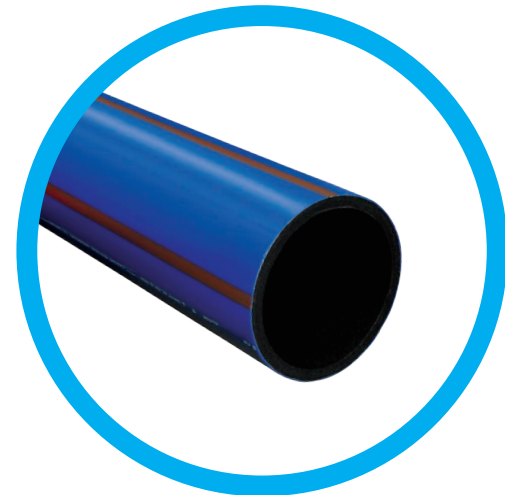
Compression fittings 3G	6-8
Liners & connection kits 3G	9
Compression fittings UTC	10
UTC Connectors guide	11
EasyLOK Large bore metric	12
Stopcock & valves	13
BSP Threaded fittings	14-15
Accessories	15



PROTECTA-LINE ● 16

Barrier system for contaminated land

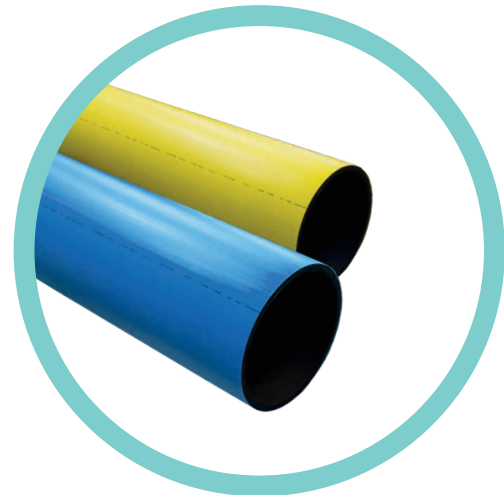
Pipe	18
3 ^c & 3 ^{CTH}	19
Compression fittings	20-21
Electrofusion fittings	22
Fabrications	23-24
Mechanical fittings	25-26
Ferrule off-takes & Accessories	26-27
Protecta-Line boundary box	28



GPS PE PIPE ● 30

PE pipes for multiple applications

GPS PE Blue	32-33
GPS PE Black	34-35
GPS PE Yellow	35-36
GPS PE Orange	37
GPS PE White	38
Enviro-Line	39



FRIALEN ● 40

Electrofusion fittings

Fittings	42-47
Accessories	47



FABRICATED AND SPIGOT FITTINGS ● 48

Fabrication fittings

For potable, raw water and sewage	50-52
For gas	53-55
Spigot fittings	57-60



MECHANICAL FITTINGS ● 62

Fittings for potable water



ADJUSTA™ ● 66

Load bearing, adjustable boundary box

Contaminated land/Rigid/ Adjusta box	68
Accessories	69
Protecta-Line boundary box	70

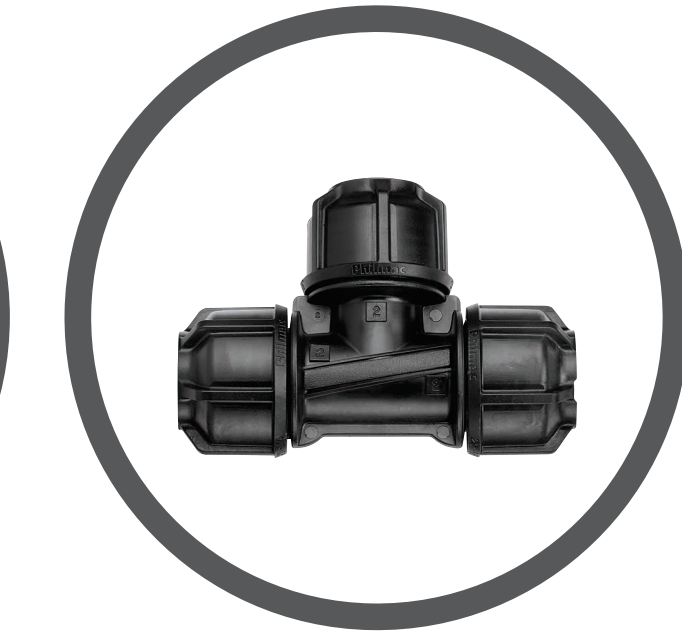


Contact us

Get in touch!

Visit: Aliaxis.co.uk/get-in-touch
Or call: +44 (0) 330 111 4233

Philmac[®]



Philmac 3G metric/imperial

Compression fittings



METRIC/IMPERIAL JOINER POL X POL

Sizes	Part number
20mm/1/2"	9122
25mm/3/4"	9133
32mm/1"	9144
40mm/1 1/4"	9155
50mm/1 1/2"	9166
63mm/2"	9177



SLIP JOINER METRIC/IMPERIAL POL X POL – No internal pipe stop, ideal flexibility for repair or retrofit

Sizes	Part number
20mm/1/2"	90122
25mm/3/4"	90133
32mm/1"	90144
40mm/1 1/4"	90155
50mm/1 1/2"	90166
63mm/2"	90177



METRIC/IMPERIAL REDUCING JOINER POL X POL

Sizes	Part number
25mm/3/4" x 20mm/1/2"	9132
32mm/1" x 20mm/1/2"	9142
32mm/1" x 25mm/3/4"	9143
40mm/1 1/4" x 25mm/3/4"	9153
40mm/1 1/4" x 32mm/1"	9154
50mm/1 1/2" x 25mm/3/4"	9163
50mm/1 1/2" x 32mm/1"	9164
50mm/1 1/2" x 40mm/1 1/4"	9165
63mm/2" x 32mm/1"	9174
63mm/2" x 40mm/1 1/4"	9175
63mm/2" x 50mm/1 1/2"	9176



END CAP

Sizes	Part number
20mm/1/2"	9029
25mm/3/4"	9039
32mm/1"	9049
40mm/1 1/4"	9059
50mm/1 1/2"	9069
63mm/2"	9079



METRIC/IMPERIAL END CONNECTOR POL X M.I. BSP

Sizes	Part number
20mm/1/2" x 1/2" BSP	9221
20mm/1/2" x 3/4" BSP	9222
20mm/1/2" x 1" BSP	9223
25mm/3/4" x 1/2" BSP	9231
25mm/3/4" x 3/4" BSP	9232
25mm/3/4" x 1" BSP	9233
32mm/1" x 3/4" BSP	9242
32mm/1" x 1" BSP	9243
32mm/1" x 1 1/4" BSP	9244
32mm/1" x 1 1/2" BSP	9245
40mm/1 1/4" x 1" BSP	9253
40mm/1 1/4" x 1 1/4" BSP	9254
40mm/1 1/4" x 1 1/2" BSP	9255
40mm/1 1/4" x 2" BSP	9256
50mm/1 1/2" x 1 1/2" BSP	9265
50mm/1 1/2" x 2" BSP	9266
63mm/2" x 1 1/2" BSP	9275
63mm/2" x 2" BSP	9276



METRIC/IMPERIAL END CONNECTOR POL X F.I. BSP

Sizes	Part number
20mm/1/2" x 1/2" BSP	9821
20mm/1/2" x 3/4" BSP	9822
20mm/1/2" x 1" BSP	9823
25mm/3/4" x 1/2" BSP	9831
25mm/3/4" x 3/4" BSP	9832
25mm/3/4" x 1" BSP	9833
32mm/1" x 3/4" BSP	9842
32mm/1" x 1" BSP	9843
32mm/1" x 1 1/4" BSP	9844
40mm/1 1/4" x 1 1/4" BSP	9854
40mm/1 1/4" x 1 1/2" BSP	9855
50mm/1 1/2" x 1 1/2" BSP	9865
50mm/1 1/2" x 2" BSP	9866
63mm/2" x 2" BSP	9876



METRIC/IMPERIAL TEE - Equal POL X POL

Sizes	Part number
20mm/1/2"	9322
25mm/3/4"	9333
32mm/1"	9344
40mm/1 1/4"	9355
50mm/1 1/2"	9366
63mm/2"	9377

Liners to suit PE pipe are required for WRAS approval, please see page 9 for these items.

For info on standards and approvals please refer to our website alixis.co.uk/Philmac

Philmac 3G metric/imperial

Compression fittings



SLIP TEE METRIC/IMPERIAL – No internal pipe stop, ideal flexibility for repair or retrofit

Sizes	Part number
20mm/1/2"	90322
25mm/3/4"	90333
32mm/1"	90344
50mm/1 1/2"	90366
63mm/2"	90377



METRIC/IMPERIAL TEE - Reducing POL X POL

Sizes	Part number
25mm/3/4" x 25mm/3/4" x 20mm/1/2"	9332
25mm/3/4" x 25mm/3/4" x 32mm/1"	9334
32mm/1" x 32mm/1" x 25mm/3/4"	9343
50mm/1 1/2" x 50mm/1 1/2" x 25mm/3/4"	9363
50mm/1 1/2" x 50mm/1 1/2" x 32mm/1"	9364
50mm/1 1/2" x 50mm/1 1/2" x 40mm/1 1/4"	9365
63mm/2" x 63mm/2" x 25mm/3/4"	9373
63mm/2" x 63mm/2" x 32mm/1"	9374
63mm/2" x 63mm/2" x 50mm/1 1/2"	9376



TEE POL X M.I. BSP

Sizes	Part number
25mm/3/4" x 1/2" BSP	9931
25mm/3/4" x 3/4" BSP	9932



TEE POL X F.I. BSP

Sizes	Part number
20mm/1/2" x 1/2" BSP	9421
20mm/1/2" x 3/4" BSP	9422
25mm/3/4" x 1/2" BSP	9431
25mm/3/4" x 3/4" BSP	9432
25mm/3/4" x 1" BSP	9433
32mm/1" x 1/2" BSP	9441
32mm/1" x 3/4" BSP	9442
32mm/1" x 1" BSP	9443
32mm/1" x 1 1/4" BSP	9444
40mm/1 1/4" x 1 1/4" BSP	9454
40mm/1 1/4" x 1 1/2" BSP	9455
50mm/1 1/2" x 1/2" BSP	9461
50mm/1 1/2" x 3/4" BSP	9462
50mm/1 1/2" x 1 1/2" BSP	9465
50mm/1 1/2" x 2" BSP	9466
63mm/2" x 2" BSP	9476



ELBOW POL X POL

Sizes	Part number
20mm/1/2"	9522
25mm/3/4"	9533
32mm/1"	9544
40mm/1 1/4"	9555
50mm/1 1/2"	9566
63mm/2"	9577



REDUCING ELBOW POL X POL

Sizes	Part number
25mm/3/4" x 20mm/1/2"	9532



ELBOW POL X F.I. BSP

Sizes	Part number
20mm/1/2" x 1/2" BSP	9621
20mm/1/2" x 3/4" BSP	9622
25mm/3/4" x 1/2" BSP	9631
25mm/3/4" x 3/4" BSP	9632
25mm/3/4" x 1" BSP	9633
32mm/1" x 1" BSP	9643
32mm/1" x 1 1/4" BSP	9644
40mm/1 1/4" x 1 1/4" BSP	9654
40mm/1 1/4" x 1 1/2" BSP	9655
50mm/1 1/2" x 1 1/2" BSP	9665
50mm/1 1/2" x 2" BSP	9666
63mm/2" x 2" BSP	9676

New sizes now available.

Liners to suit PE pipe are required for WRAS approval, please see page 9 for these items.



ELBOW POL X M.I. BSP

Sizes	Part number
20mm/1/2" x 1/2" BSP	9721
25mm/3/4" x 3/4" BSP	9732
32mm/1" x 1" BSP	9743
32mm/1" x 1 1/4" BSP	9744
40mm/1 1/4" x 1" BSP	9753
40mm/1 1/4" x 1 1/4" BSP	9754
40mm/1 1/4" x 1 1/2" BSP	9755
50mm/1 1/2" x 1 1/2" BSP	9765
63mm/2" x 2" BSP	9776



45 DEG ELBOW POL X POL

Sizes	Part number
20mm/1/2"	9028
25mm/3/4"	9038
32mm/1"	9048
40mm/1 1/4"	9058
50mm/1 1/2"	9068
63mm/2"	9078

For info on standards and approvals please refer to our website alixis.co.uk/Philmac

Philmac 3G metric/imperial

Compression fittings



WALL PLATE ELBOW PLASTIC

Sizes	Part number
20mm/1/2" x 1/2" BSP	9022
25mm/3/4" x 1/2" BSP	9031
25mm/3/4" x 3/4" BSP	9032



TANK CONNECTOR ASSEMBLY – c/w Seal Washers

Sizes	Part number
25mm/3/4" x 3/4" BSP	9780
32mm/1" x 1" BSP	9781

Other tank connector options available on page 15.



WALL PLATE ELBOW METAL

Sizes	Part number
20mm/1/2" x 1/2" BSP	9228
25mm/3/4" x 3/4" BSP	9229



HOSE UNION BIB TAP BS6282 CV

Sizes	Part number
DZR 1/2" c/w double check valve	3022
DZR 3/4" c/w double check valve	3033



ARCTIC ICE RESISTANT BIB TAP

Sizes	Part number
1/2" BSP	8021
3/4" BSP	8022
1" BSP *Water: -20°C	8023

For Arctic Resistance Ball Valves, see page 13



HOSE UNION TAP CONNECTOR

Sizes	Part number
1/2"	HOSCON 21
3/4" (to suit 8022 only)	HOSCON 22



METRIC SADDLE

Sizes	Part number
50mm x 25mm/3/4"	90635
63mm x 25mm/3/4"	90735



FLANGE ADAPTOR Flange to BS 4504

Sizes	Part number
50mm/1 1/2" x 2"	87766
63mm/2" x 2"	87776



JOINER

Sizes	Part number
20mm/1/2" x 15mm	1321
25mm/3/4" x 15mm	1331
25mm/3/4" x 22mm	1332
32mm/1" x 22mm	1342
32mm/1" x 28mm	1343

Two part assembled to correct torque. Do not tighten further. For connections to pex pipe please refer to pipe manufacturers installation instructions and only use pex liners compatible with the pipe being used.



ELBOW

Sizes	Part number
20mm/1/2" x 15mm	1521
25mm/3/4" x 15mm	1531
25mm/3/4" x 22mm	1532
32mm/1" x 28mm	2543

Two part assembled to correct torque. Do not tighten further. For connections to pex pipe please refer to pipe manufacturers installation instructions and only use pex liners compatible with the pipe being used.

Liners to suit PE pipe are required for WRAS approval, please see page 9 for these items.



METRIC/IMPERIAL STOPCOCK POL X POL

Sizes	Part number
20mm/1/2"	2822
25mm/3/4"	2833
32mm/1"	2844



METRIC/IMPERIAL STOPCOCK POL x FI

Sizes	Part number
25mm/3/4" x 1/2"	2831
25mm/3/4" x 3/4"	2832
32mm/1" x 3/4"	2842
32mm/1" x 1"	2843



METRIC/IMPERIAL 1/4 Turn BALL VALVE POL X POL

Sizes	Part number
20mm/1/2" (16mm Nominal Bore)	95272
25mm/3/4" (16mm Nominal Bore)	95372
25mm/3/4" (19.5mm Nominal Bore)	95273
32mm/1" (19.5mm Nominal Bore)	95373



MDPE LINERS EN12201/BS 6572 (below ground) & EN12201/BS 6730 (above ground)

Sizes	Part number
20mm	78002
25mm	78003
32mm	78004
50mm	78006
63mm	78007



METRIC/IMPERIAL CONNECTION KIT

Sizes	Part number
20mm/1/2"	999002
25mm/3/4"	999003
32mm/1"	999004
40mm/1 1/4"	999005
50mm/1 1/2"	999006
63mm/2"	999007



METRIC/IMPERIAL NORMAL GAUGE CONNECTION KIT BS 1972 IRS 134

Sizes	Part number
1/2" (fits 3/8" LD and HD)	93012
3/4"	93003
1"	93004
1 1/4"	93005
1 1/2"	93006
2"	93007



REDUCING SETS – BS 6572/6730 Metric & BS 1972/3284 & IRS 135 Imperial

Sizes	Part number
25mm/3/4" x 20mm/1/2"	98032
32mm/1" x 20mm/1/2"	98042
32mm/1" x 25mm/3/4"	98043
50mm/1 1/2" x 25mm/3/4"	98063
50mm/1 1/2" x 32mm/1"	98064
63mm/2" x 25mm/3/4"	98073
63mm/2" x 32mm/1"	98074
63mm/2" x 50mm/1 1/2"	98076



NORMAL GAUGE REDUCING SETS

Sizes	Part number
3/4" x 1/2"	93132
1" x 1/2"	93142
1 x 3/4"	93143



COPPER CONNECTION KIT BS EN 1057 – Connection Kit for copper pipe for above and below ground use

Sizes	Part number
20mm/1/2" x 15mm	86002
25mm/3/4" x 22mm	86003
32mm/1" x 28mm	86004
25mm/3/4" x 15mm	86032

Suitable for single use only. Not suitable for PB or PEX pipe.



BLANKING PLUG

Sizes	Part number
20mm/1/2"	9128
25mm/3/4"	9138
32mm/1"	9148
40mm/1 1/4"	9158
50mm/1 1/2"	9168
63mm/2"	9178



METRIC PVC/ABS CONNECTION COLLET

Part no.	Size	Pcks
94202	20mm	10
94203	25mm	10
94204	32mm	10
94205	40mm	1
94206	50mm	1
94207	63mm	1



IMPERIAL PVC/ABS CONNECTION COLLET/KIT

Part no.	Size	Pcks
94402	1/2" (20mm/1/2" body)	10
94403	3/4" (25mm/3/4" body)	10
94404	1" (32mm/1" body)	10
94405	1 1/4" (40mm/1 1/4" body)	1
94406	1 1/2" (50mm/1 1/2" body)*	1
94407	2" (63mm/2" body)*	1

* Complete with nut and seal

For info on standards and approvals please refer to our website alixis.co.uk/Philmac

For info on standards and approvals please refer to our website alixis.co.uk/Philmac

Philmac UTC

Compression fittings



UNIVERSAL TRANSITION JOINER UTC X POL c/w Metric MDPE Liner

Sizes	Part number
15-21mm x 20mm/1/2"	1032
15-21mm x 25mm/3/4"	1033
21-27mm x 20mm/1/2"	1042
21-27mm x 25mm/3/4"	1043
27-34mm x 20mm/1/2"	1052
27-34mm x 25mm/3/4"	1053
27-34mm x 32mm/1"	1054
27-34mm x 40mm/1 1/4"	1055
34-39mm x 32mm/1"	1074
34-39mm x 40mm/1 1/4"	1075
39-43mm x 32mm/1"	1064
39-43mm x 40mm/1 1/4"	1065
47-49mm x 50mm/1 1/2"	1086
47-49mm x 63mm/2"	1087
59-61mm x 63mm/2"	1097



UNIVERSAL TRANSITION ELBOW UTC X POL c/w Metric MDPE Liner

Sizes	Part number
15-21mm x 25mm/3/4"	1533
21-27mm x 25mm/3/4"	1543
21-27mm x 32mm/1"	1544
27-34mm x 25mm/3/4"	1553
27-34mm x 32mm/1"	1653



UNIVERSAL TRANSITION DOUBLE ENDED REPAIR JOINER

Sizes	Part number
15-21mm x 15-21mm	1133
21-27mm x 21-27mm	1144
27-34mm x 27-34mm	1155
34-39mm x 34-39mm	1177
39-43mm x 39-43mm	1166
47-49mm x 47-49mm	1188
59-61mm x 59-61mm	1199



PIPE GAUGE – for use with Universal Transition Coupling

Sizes	Part number
15-34mm	1135
27-43mm	1136
43-63mm	1137



UNIVERSAL TRANSITION REDUCED REPAIR JOINER

Sizes	Part number
21-27mm x 15-21mm	1143
27-34mm x 21-27mm	1154
27-34mm x 15-21mm	1153
39-43mm x 27-34mm	1165



UNIVERSAL TRANSITION M.I. END CONNECTOR UTC X M.I. BSP

Sizes	Part number
15-21mm x 1/2" BSP	1231
15-21mm x 3/4" BSP	1232
15-21mm x 1" BSP	1233
21-27mm x 3/4" BSP	1242
21-27mm x 1" BSP	1243
21-27mm x 1 1/4" BSP	1244
27-34mm x 3/4" BSP	1252
27-34mm x 1" BSP	1253
27-34mm x 1 1/4" BSP	1254
27-34mm x 1 1/2" BSP	1255

Philmac UTC connectors guide

GUIDE ONLY – Actual size dependant on pipe condition

UTC RANGE	15-21mm	21-27mm	27-34mm	34-39mm	39-43mm	47-49mm	59-61mm
PIPE CIRCUMFERENCE	47-66mm	68-85mm	85-107mm	107-122mm	122-135mm	148-154mm	185-192mm
Alkathene	3/8"	1/2"	3/4"	1"	1-1/4"	1-1/2"	2"
Normal Gauge IRS 134	1/2"	3/4"	1"	1-1/4"			
Heavy Gauge IRS 135		1/2"	3/4"	1"			
Copper	15mm	22mm	28mm	35mm	42mm		
Galvanised Iron	3/8"	1/2"	3/4"	1"	1-1/4"	1-1/2"	2"
Stainless Steel	3/8"	1/2"	3/4"	1"	1-1/4"	1-1/2"	2"
Metric ABS/PVC	16 & 20mm	25mm	32mm		40mm		
Imperial ABS/PVC	3/8"	1/2"	3/4"	1"	1-1/4"	1-1/2"	2"
Lead	3/8"	1/2"	3/4"	1-1/4"	1"	1-1/2"	
	5lb (20mm OD)	6lb (21.6mm OD)	9lb (30.6mm OD)	7lb (37.6mm OD)	16lb (41mm OD)	12lb (48mm OD)	
		7lb (23.2mm OD)	11lb (32.8mm OD)				
		9lb (25.4mm OD)					
	1/2"	3/4"	1"		1-1/4"		
	2lb (16mm OD)	4lb (25.2mm OD)	6lb (31mm OD)		9lb (39.2mm OD)		
	4lb (19.2mm OD)	5lb (26.4mm OD)	7lb (31.6mm OD)				

Fitting selection can be made easier with use of the Philmac Pipe Gauge

Copper

If user does not want to use a UTC, the copper needs to be M.I. or F.I. ended so that we can offer a Met/Imp fitting to suit. Same rule applies for 54mm O.D. copper. Use copper compression fitting to adapt to M.I. or F.I. and then use Met/Imp fitting.

Lead

The general condition of lead pipe can make sizing difficult at top and bottom tolerance. If the recommended UTC is not successful the next size up or down, depending on fit, should be offered.

For info on standards and approvals please refer to our website alixis.co.uk/Philmac

For info on standards and approvals please refer to our website alixis.co.uk/Philmac

Philmac EasyLOK Large bore PE metric

Fittings range



JOINER POL X POL

Sizes	Part number
75 mm	97 6188 00
90 mm	97 6199 00
110 mm	97 6100 00



REDUCING JOINER

Sizes	Part number
75mm x 63mm	97 6187 00
90mm x 75mm	97 6198 00
110mm x 90mm	97 6109 00



METRIC SLIP JOINER PE X PE

Sizes	Part number
75mm	97 6018 80
90mm	97 6019 90
110mm	97 6010 00



END CONNECTOR POL X M.I. BSP

Sizes	Part number
75mm x 2" BSP	97 6286 00
75mm x 3" BSP	97 6288 00
90mm x 3" BSP	97 6298 00
110mm x 4" BSP	97 6209 00



TEE - EQUAL POL X POL

Sizes	Part number
75 mm	97 6388 00
90 mm	97 6398 00
110 mm	97 6300 00



TEE POL X F.I. BSP

Sizes	Part number
75mm x 2" BSP	97 6486 00
90mm x 3" BSP	97 6498 00
110mm x 4" BSP	97 6409 00



ELBOW POL X POL

Sizes	Part number
75 mm	97 6588 00
90 mm	97 6599 00
110 mm	97 6500 00



ELBOW POL X F.I. BSP

Sizes	Part number
75mm x 2" BSP	97 6686 00
90mm x 3" BSP	97 6698 00
110 110mm x 4" BSP	97 6609 00



END CAP

Sizes	Part number
75 mm	97 6089 00
90 mm	97 6099 00
110 mm	97 6009 00



FLANGE ADAPTOR FLANGE TO BS 4504

Sizes	Part number
90mm x 3"	97 6698 00
110mm x 4"	97 6609 00

Philmac stopcock and valves

Ball and back flow prevention



STOPCOCK POL X POL

Sizes	Part number
20mm/1/2"	2822
25mm/3/4"	2833
32mm/1"	2844



STOPCOCK POL X FI

Sizes	Part number
25mm/3/4" x 1/2"	2831
25mm/3/4" x 3/4"	2832
32mm/1" x 3/4"	2842
32mm/1" x 1"	2843



1/4 TURN BALL VALVE POL X POL

Sizes	Part number	Nominal Bore
20mm/1/2"	95272	16
25mm/3/4"	95372	16
25mm/3/4"	95273	19.5
32mm/1"	95373	19.5



ARCTIC ICE RESISTANT BALL VALVE

Sizes	Part number	Nominal Bore
1/2"	8031	15
3/4"	8032	20
1"	8033	25



BALL VALVE F.I. X F.I. BSP

Sizes	Part number	Nominal Bore
3/4" F.I. x 3/4" F.I.	55002	16
1" F.I. x 1" F.I.	55003	19.5
1 1/4" F.I. x 1 1/4" F.I.	55004	26
1 1/2" F.I. x 1 1/2" F.I.	55005	32
2" F.I. x 2" F.I.	55006	40



BALL VALVE M.I. X M.I. BSP

Sizes	Part number	Nominal Bore
3/4" M.I. x 3/4" M.I.	55402	16
1" M.I. x 1" M.I.	55403	19.5



AIR RELEASE VALVE M.I. BSP

Sizes	Part number	Nominal Bore
1" BSP	93109	25



FOOT VALVE F.I. BSP

Sizes	Part number	Nominal Bore
3/4" BSP	58012	22
1" BSP	58013	27
1 1/4" BSP	58014	32
1 1/2" BSP	58015	38
2" BSP	58016	50



SINGLE CHECK NON RETURN VALVE F.I. BSP X F.I. BSP

Sizes	Part number	Nominal Bore
3/4" F.I. x 3/4" F.I.	58022	22
1" F.I. x 1" F.I.	58023	27
1 1/4" F.I. x 1 1/4" F.I.	58024	32
1 1/2" F.I. x 1 1/2" F.I.	58025	38
2" F.I. x 2" F.I.	58026	50



DZR DOUBLE CHECK VALVE F.I. BSP X F.I. BSP TO BS 6282 - Back Flow Prevention Category 3

Sizes	Part number	Nominal Bore
1/2" F.I. x 1/2" F.I.	11101	15
3/4" F.I. x 3/4" F.I.	11202	20
1" F.I. x 1" F.I.	11303	25



GM FI X FI STOPCOCK (BS.5433 TYPE20)

Sizes	Part number
1/2" x 1/2" F.I.	2511
3/4" x 3/4" F.I.	2522
1" x 1" F.I.	2533
1 1/2" x 1 1/2" F.I.	2055
2" x 2" F.I.	2066



Metric/Imperial BSP End Connectors (for these Valves)

METRIC/IMPERIAL END CONNECTOR POL X M.I. BSP

Sizes	Part number
20mm/1/2" x 1/2" BSP	9221
20mm/1/2" x 3/4" BSP	9222
20mm/1/2" x 1" BSP	9223
25mm/3/4" x 1/2" BSP	9231
25mm/3/4" x 3/4" BSP	9232
25mm/3/4" x 1" BSP	9233
32mm/1" x 3/4" BSP	9242
32mm/1" x 1" BSP	9243
32mm/1" x 1 1/4" BSP	9244
32mm/1" x 1 1/2" BSP	9245
40mm/1 1/4" x 1" BSP	9253
40mm/1 1/4" x 1 1/4" BSP	9254
40mm/1 1/4" x 1 1/2" BSP	9255
40mm/1 1/4" x 2" BSP	9256
50mm/1 1/2" x 1 1/2" BSP	9265
50mm/1 1/2" x 2" BSP	9266
63mm/2" x 1 1/2" BSP	9275
63mm/2" x 2" BSP	9276

Liners to suit PE pipe are required for WRAS requirements, please see page 9 for these items.

For info on standards and approvals please refer to our website alixis.co.uk/Philmac

For info on standards and approvals please refer to our website alixis.co.uk/Philmac

Philmac BSP threaded

Fittings range



TEE FEMALE

Sizes	Part number
½" BSP	4511
¾" BSP	4522
1" BSP	4533
1¼" BSP	4544
1½" BSP	4555
2" BSP	4566



ELBOW FEMALE

Sizes	Part number
½" BSP	4611
¾" BSP	4622
1" BSP	4633
1¼" BSP	4644
1½" BSP	4655
2" BSP	4666



ELBOW MALE X FEMALE

Sizes	Part number
½" x ½" BSP	4691
¾" x ¾" BSP	4692
1" x 1" BSP	4693
1¼" x 1¼" BSP	4694
1½" x 1½" BSP	4695
2" x 2" BSP	4696



PLUG

Sizes	Part number
½" BSP	4011
¾" BSP	4022
1" BSP	4033
1¼" BSP	4044
1½" BSP	4055
2" BSP	4066



BUSH - REDUCING

Sizes	Part number
¾" x ½" BSP	4121
1" x ½" BSP	4131
1" x ¾" BSP	4132
1¼" x ½" BSP	4141
1¼" x ¾" BSP	4142
1¼" x 1" BSP	4143
1½" x ½" BSP	4151
1½" x ¾" BSP	4152
1½" x 1" BSP	4153
1½" x 1¼" BSP	4154
2" x ½" BSP	4161
2" x ¾" BSP	4162
2" x 1" BSP	4163
2" x 1¼" BSP	4164
2" x 1½" BSP	4165
3" x 2" BSP	4186
4" x 3" BSP	4198



NIPPLE

Sizes	Part number
½" BSP	4211
¾" BSP	4222
1" BSP	4233
1¼" BSP	4244
1½" BSP	4255
2" BSP	4266



NIPPLE - REDUCING

Sizes	Part number
¾" x ½" BSP	4221
1" x ½" BSP	4231
1" x ¾" BSP	4232
1¼" x ½" BSP	4241
1¼" x ¾" BSP	4242
1¼" x 1" BSP	4243
1½" x ½" BSP	4251
1½" x ¾" BSP	4252
1½" x 1" BSP	4253
1½" x 1¼" BSP	4254
2" x ½" BSP	4261
2" x ¾" BSP	4262
2" x 1" BSP	4263
2" x 1¼" BSP	4264
2" x 1½" BSP	4265



SOCKET

Sizes	Part number
½" BSP	4311
¾" BSP	4322
1" BSP	4333
1¼" BSP	4344
1½" BSP	4355
2" BSP	4366



REDUCING SOCKET

Sizes	Part number
¾" x ½" BSP	4321
1" x ½" BSP	4331
1" x ¾" BSP	4332
1¼" x 1" BSP	4343
1½" x ¾" BSP	4352
1½" x 1" BSP	4353
1½" x 1¼" BSP	4354
2" x ¾" BSP	4362
2" x 1" BSP	4363
2" x 1½" BSP	4365



CAP

Sizes	Part number
½" BSP	4901
¾" BSP	4902
1" BSP	4903
1¼" BSP	4904
1½" BSP	4905
2" BSP	4906



M.I. BSP HOSE TAILS

Sizes	Part number
½" BSP	RXHT15
¾" BSP	RXHT20
1" BSP	RXHT25
1¼" BSP	RXHT32
1½" BSP	RXHT40
2" BSP	RXHT50



IBC SWIVEL-IT ADAPTORS

Sizes	Part number
2" x ¾" F.I. BSP	60UD075B
2" x 1" F.I. BSP	60UD10B
2" x 2" F.I. BSP	60UD20B

N.B. All threads are BSP tapered. Use PTFE Tape on threads for lubrication purposes. Do not overtighten.

For info on standards and approvals please refer to our website alixis.co.uk/Philmac

Philmac BSP threaded

Fittings range



MALE THREADED TANKCONNECTOR WITH FEMALE INLET

Sizes	Part number
½" BSP	RXTT115
¾" BSP	RXTT120
1" BSP	RXTT125
1¼" BSP	RXTT132
1½" BSP	RXTT140
2" BSP	RXTT150



CUT TO SIZE TANK CONNECTOR KITS (PVC) - Containing long thread (1 ft long), backnuts (2) and a washer

Sizes	Part number
½" BSP	TCK050
¾" BSP	TCK075
1" BSP	TCK100



IBC SWIVEL-IT ADAPTORS

Sizes	Part number
2" x ¾" F.I. BSP	60UD075B
2" x 1" F.I. BSP	60UD10B
2" x 2" F.I. BSP	60UD20B

N.B. All threads are BSP tapered. Use PTFE Tape on threads for lubrication purposes. Do not overtighten.

For info on standards and approvals please refer to our website alixis.co.uk/Philmac

Philmac Accessories



HIGH FLOW BALLCOCK - with or without nut

Sizes	Part no.
¾" standard thread 25mm tail	RXPTV20
¾" long thread 45mm tail c/w nut	RXPTV20L
¾" float valve 165mm lever long thread	70221



PIPE CUTTER

Sizes	Part no.
Up to 32mm (Medium)	1769
Up to 63mm (Large)	1770



SPANNER

Sizes	Part no.
20 - 32mm 'Y' spanner (plastic)	702431
20 - 32mm 'Y' spanner (metal)	7024
32 - 63mm 'C' spanner	7047
40 - 63mm 'Y' spanner	7057
50 - 110mm 'C' spanner	7050



SQUEEZE OFF TOOLS

Sizes	Part number
20-32mm	MINI2032
20-63mm	MIDI2063



PIPE CLIPS Suitable for MDPE pipe

Sizes	Part number
16mm (oc)	4305
20mm (oc)	4306
25mm (oc)	4307
32mm (cc)	4308
40mm (cc)	4309
50mm (cc)	4310
63mm (cc)	4312
90mm (cc)	4313
110mm (cc)	4314

(oc) openclip, (cc) closedclip.

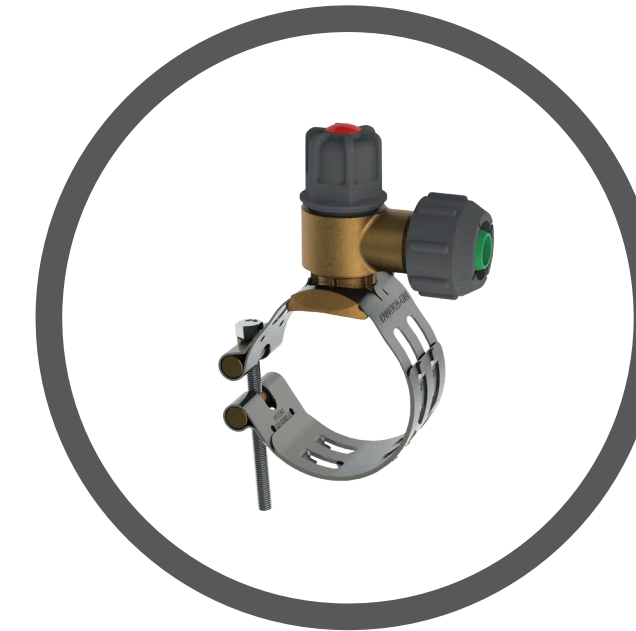
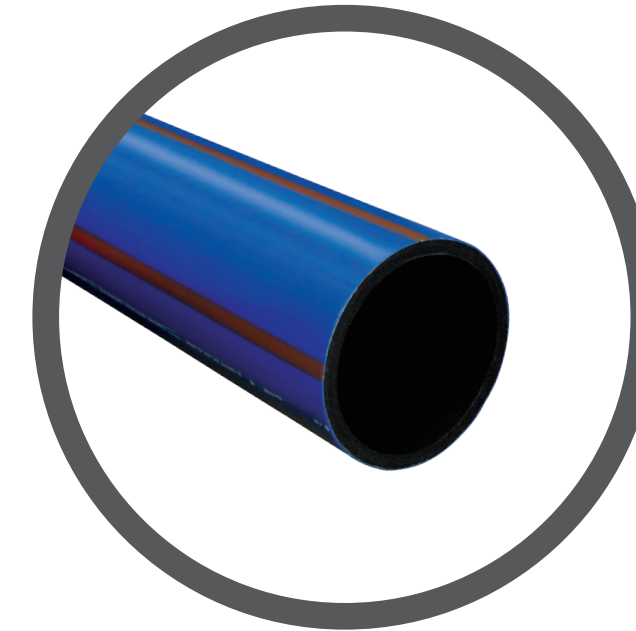


PIPE REPAIR KITS

Sizes	Part number
Pipe repair kit 20mm	PRK20
Pipe repair kit 25mm	PRK25
Pipe repair kit 32mm	PRK32

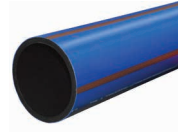
N.B. All threads are BSP tapered. Use PTFE Tape on threads for lubrication purposes. Do not overtighten.

PROTECTA-LINE



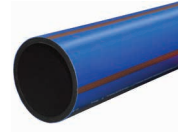
Protecta-Line pipe

For contaminated land



STICKS SDR 11

Size (mm)	6M Product Code	12M Product Code
63	44 512 311	-
90	44 512 313	44 527 313
110	44 512 314	44 527 314
125	44 512 315	44 527 315
160	44 512 317	44 527 317
180	44 512 318	44 527 318
225	44 512 320	44 527 320
250	44 512 321	44 527 321
280	44 512 322	44 527 322
315	44 512 323	44 527 323
355	44 512 324	44 527 324
400	44 512 325	44 527 325
450	44 512 326	44 527 326
500	44 512 327	44 527 327
560	44 512 328	44 527 328
630	44 512 329	44 527 329



STICKS SDR 17

Size (mm)	6M Product Code	12M Product Code
90	44 653 313	44 654 313
110	44 653 314	44 654 314
125	44 653 315	44 654 315
160	44 653 317	44 654 317
180	44 653 318	44 654 318
225	44 653 320	44 654 320
250	44 653 321	44 654 321
280	44 653 322	44 654 322
315	44 653 323	44 654 323
355	44 653 324	44 654 324
400	44 506 325	44 507 325
450	44 506 326	44 507 326
500	44 506 327	44 507 327
560	44 506 328	44 507 328
630	44 506 329	44 507 329



COILS

Size (mm)	SDR	25M Product Code	50M Product Code	100M Product Code
25	11	44 658 307	44 659 307	-
32	11	44 658 308	44 659 308	-
63	11	44 658 311	44 659 311	44 660 311
90	11	-	44 659 313	44 660 313
90	17	-	44 655 313	44 656 313
110	11	-	44 659 314	44 660 314
110	17	-	44 655 314	44 656 314
125	11	-	44 659 315	44 660 315
125	17	-	44 655 315	44 656 315
160	11	-	44 659 317	44 660 317
160	17	-	44 655 317	44 656 317
180	11	-	44 659 318	44 660 318
180	17	-	44 655 318	44 656 318

Protecta-Line 3^C & 3^{CTH}

For contaminated land



3^C - Clean, capped coils for installation without pre-chlorination

3^C

Size (mm)	50M Product Code	75M Product Code	100M Product Code
63	44 845 311	-	44 860 311
90	44 845 313	44 862 313	44 860 313
110	44 845 314	44 862 314	44 860 314
125	44 845 315	44 862 315	44 860 315
160	44 845 317	44 862 317	44 860 317
180	44 845 318	44 862 318	44 860 318



3^{CTH} - Clean, capped coils with towing head for installation without pre-chlorination

3^{CTH}

Size (mm)	50M Product Code	75M Product Code	100M Product Code
63	44 850 311	-	44 852 311
90	44 850 313	44 851 313	44 852 313
110	44 850 314	44 851 314	44 852 314
125	44 850 315	44 851 315	44 852 315
160	44 850 317	44 851 317	44 852 317
180	44 850 318	44 851 318	44 852 318

3^{CTH}

Size (mm)	50M Product Code	75M Product Code	100M Product Code
90	44 853 313	44 854 313	44 855 313
110	44 853 314	44 854 314	44 855 314
125	44 853 315	44 854 315	44 855 315
160	44 853 317	44 854 317	44 855 317
180	44 853 318	44 854 318	44 855 318

For info on approvals and standards please refer our website alixis.co.uk/Protecta-Line

For info on approvals and standards please refer our website alixis.co.uk/Protecta-Line

Protecta-Line compression fittings

For contaminated land



PROTECTA-LINE TO PROTECTA-LINE COUPLERS

Size (mm)	Product Code
25 x 25	44 100 307
32 x 32	44 100 308
63 x 63	44 100 311



PROTECTA-LINE TO COPPER COUPLERS

Size (mm)	Product Code
25 x 15	44 996 005
25 x 22	44 996 006
32 x 28	44 996 007



PROTECTA-LINE TO PROTECTA-LINE REDUCING COUPLERS

Size (mm)	Product Code
32 x 25	44 114 409
63 x 25	44 114 412
63 x 32	44 114 415



EQUAL TEES

Size (mm)	Product Code
25 x 25	44 122 307
32 x 32	44 122 308
63 x 63	44 122 311



90° ELBOWS

Size (mm)	Product Code
25	44 115 307
32	44 115 308
63	44 115 311



REDUCING SETS – TO ALLOW EASY PROTECTA-LINE DIAMETER CHANGES

Size (mm)	Product Code
32 x 25	44 105 409
63 x 32	44 105 415



END CONNECTORS – PROTECTA-LINE X FEMALE IRON BSP TAPERED

Size (mm x inch)	Product Code
25 x 3/4	44 101 608
32 x 1	44 101 612
63 x 2	44 101 629



STOP COCKS – BS 5433 TYPE

Size (mm)	Product Code
25*	44 142 307
32**	44 142 308

* Includes 22mm copper Type A insert
** Includes 28mm copper Type A insert

Protecta-Line compression fittings

For contaminated land



END CONNECTORS – PROTECTA-LINE X MALE IRON BSP TAPERED

Size (mm x inch)	Product Code
25 x 3/4	44 151 608
32 x 3/4	44 151 611
32 x 1	44 151 612
63 x 1 1/2	44 151 628
63 x 2	44 151 629



90° ELBOWS – PROTECTA-LINE X FEMALE IRON BSP TAPERED

Size (mm x inch)	Product Code
25 x 3/4	44 396 608
32 x 1	44 396 612
63 x 2	44 396 629

For info on approvals and standards please refer our website alixis.co.uk/Protecta-Line

For info on approvals and standards please refer our website alixis.co.uk/Protecta-Line

Protecta-Line electrofusion fittings

For contaminated land



COUPLERS – REMOVABLE CENTRE STOP

Size (mm)	SDR	Black Code
90	11	PF 612 687
110	11	PF 612 688
125	11	PF 612 689
160	11	PF 612 691



COUPLERS – SLIDEOVER

Size (mm)	SDR	Black Code
180	11	PF 612 672
225	11	PF 612 674
250	11	PF 612 675
280	11	PF 615 073
315	11	PF 612 670
355	11	PF 615 074



FLANGED TEES

Size (mm)	SDR	Black Code
90 x 80 PN16	11	PF 301 313
110 x 80 PN16	11	PF 301 314
125 x 80 PN16	11	PF 301 315
160 x 80 PN16	11	PF 301 317
180 x 80 PN16	11	PF 301 318
90 x 100 PN16	11	PF 302 313
110 x 100 PN16	11	PF 302 314
125 x 100 PN16	11	PF 302 315
160 x 100 PN16	11	PF 302 317
180 x 100 PN16	11	PF 302 318
160 x 150 PN16	11	PF 303 317
180 x 150 PN16	11	PF 303 318



FLANGE ADAPTOR KIT

Size (mm)	SDR	Black Code
90 x 80	11	PF 251 313
110 x 100	11	PF 251 314
125 x 100	17	PF 250 315
160 x 150	17	PF 250 317
180 x 150	17	PF 250 318
225 x 200	17	PF 250 320
250 x 200	17	PF 250 534
250 x 250	17	PF 250 321
280 x 250	17	PF 250 322
315 x 250	17	PF 250 543
315 x 300	17	PF 250 323
355 x 300	17	PF 250 547
355 x 350	17	PF 250 324

When using an EPDM gasket, ensure that joint is wrapped.

Protecta-Line fabrications

For contaminated land



REDUCERS

Size (mm)	SDR 11 Code	SDR 17 Code
110 x 90	44 323 483	44 322 483
125 x 90	44 323 484	44 322 484
160 x 90	44 323 486	44 322 486
160 x 110	44 323 495	44 322 495
160 x 125	44 323 504	44 322 504
180 x 90	44 323 487	44 322 487
180 x 125	44 323 505	44 322 505
225 x 160	44 323 507	44 322 507
250 x 125	44 323 508	44 322 508
250 x 180	44 323 529	44 322 529
315 x 180	44 323 531	44 322 531
315 x 250	44 323 543	44 322 543
355 x 180	44 323 532	44 322 532
355 x 250	44 323 544	44 322 544
355 x 315	44 323 547	44 322 547



EQUAL TEES

Size (mm)	SDR 11 Code	SDR 17 Code
90	44 321 313	44 320 313
110	44 321 314	44 320 314
125	44 321 315	44 320 315
160	44 321 317	44 320 317
180	44 321 318	44 320 318
225	44 321 320	44 320 320
250	44 321 321	44 320 321
280	44 321 322	44 320 322
315	44 321 323	44 320 323
355	44 321 324	44 320 324



FLANGED SHORT BRANCH TEES

Size (mm)	SDR 11 Code	SDR 17 Code
90 x DN80	44 341 313	44 310 313
110 x DN80	44 341 314	44 310 314
125 x DN80	44 341 315	44 310 315
160 x DN80	44 341 317	44 310 317
180 x DN80	44 341 318	44 310 318
225 x DN80	44 341 320	44 310 320
250 x DN80	44 341 321	44 310 321
280 x DN80	44 341 322	44 310 322
315 x DN80	44 341 323	44 310 323
355 x DN80	44 341 324	44 310 324
90 x DN100	44 342 313	44 311 313
110 x DN100	44 342 314	44 311 314
125 x DN100	44 342 315	44 311 315
160 x DN100	44 342 317	44 311 317
180 x DN100	44 342 318	44 311 318
225 x DN100	44 342 320	44 311 320
250 x DN100	44 342 321	44 311 321
280 x DN100	44 342 322	44 311 322
315 x DN100	44 342 323	44 311 323
355 x DN100	44 342 324	44 311 324
160 x DN150	44 343 317	44 312 317
180 x DN150	44 343 318	44 312 318
225 x DN150	44 343 320	44 312 320
250 x DN150	44 343 321	44 312 321
280 x DN150	44 343 322	44 312 322
315 x DN150	44 343 323	44 312 323
355 x DN150	44 343 324	44 312 324



END CAPS

Size (mm)	SDR 11 Code	SDR 17 Code
90	44 332 313	44 331 313
110	44 332 314	44 331 314
125	44 332 315	44 331 315
160	44 332 317	44 331 317
180	44 332 318	44 331 318
225	44 332 320	44 331 320
250	44 332 321	44 331 321
280	44 332 322	44 331 322
315	44 332 323	44 331 323
355	44 332 324	44 331 324



REDUCERS

Size (mm)	Black Code
110 x 90	PF 615 693
125 x 90	PF 615 694
125 x 110	PF 616 510
160 x 110	PF 615 695
180 x 125	PF 616 511



90° ELBOWS

Size (mm)	Black Code
90	PF 612 103
110	PF 612 105
125	PF 612 107
160	PF 615 276
180	PF 615 689



EQUAL TEES

Size (mm)	Black Code
90	PF 612 166
110	PF 612 167
125	PF 612 168
160	PF 615 277
180	PF 615 691



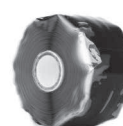
45° ELBOWS

Size (mm)	Black Code
90	PF 612 102
110	PF 612 104
125	PF 612 106
160	PF 615 275
180	PF 615 687



ALUMINIUM WRAPPING TAPE

Description	Product Code
Aluminium wrapping tape (45m long x 50mm wide)	44 996 008



SILICONE TAPE

Description	Product Code
Silicone tape (10.9m long x 48mm wide)	53 996 001



STUB FLANGE ASSEMBLIES PN16

Size (mm)	SDR 11 Code	SDR 17 Code
90 x DN80	44 327 313	44 326 313
110 x DN100	44 327 314	44 326 314
125 x DN100	44 327 315	44 326 315
160 x DN150	44 327 317	44 326 317
180 x DN150	44 327 318	44 326 318
225 x DN200	44 327 320	44 326 320
250 x DN250	44 327 321	44 326 321
280 x DN250	44 327 322	44 326 322
315 x DN300	44 327 323	44 326 323
355 x DN350	44 327 324	44 326 324



SLIMFLANGE ASSEMBLIES

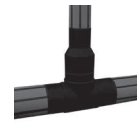
Size (mm)	SDR 11 Code	SDR 17 Code
250 x DN200	44 453 321	44 452 321
315 x DN250	44 453 323	44 452 323
355 x DN300	44 453 324	44 452 324

For info on approvals and standards please refer our website alixis.co.uk/Protecta-Line

For info on approvals and standards please refer our website alixis.co.uk/Protecta-Line

Protecta-Line fabrications

For contaminated land



REDUCED BRANCH TEES

Size (mm)	Size (mm)	SDR 11 Code	SDR 17 Code
90mm Branch	110	44 347 314	44 356 314
	125	44 347 315	44 356 315
	160	44 347 317	44 356 317
	180	44 347 318	44 356 318
	225	44 347 320	44 356 320
	250	44 347 321	44 356 321
	280	44 347 322	44 356 322
125mm Branch	315	44 347 323	44 356 323
	355	44 347 324	44 356 324
	180	44 348 318	44 357 318
	225	44 348 320	44 357 320
	250	44 348 321	44 357 321
	280	44 348 322	44 357 322
	315	44 348 323	44 357 323
180mm Branch	355	44 348 324	44 357 324
	225	44 349 320	44 358 320
	250	44 349 321	44 358 321
	280	44 349 322	44 358 322
250mm Branch	315	44 349 323	44 358 323
	355	44 349 324	44 358 324
	315	44 335 323	44 336 323
355	44 335 324	44 336 324	



90° MITRED ELBOWS

Size (mm)	SDR 11 Code	SDR 17 Code
90	44 244 313	44 243 313
110	44 244 314	44 243 314
125	44 244 315	44 243 315
160	44 244 317	44 243 317
180	44 244 318	44 243 318
225	44 244 320	44 243 320
250	44 244 321	44 243 321
280	44 244 322	44 243 322
315	44 244 323	44 243 323
355	44 244 324	44 243 324



45° MITRED ELBOWS

Size (mm)	SDR 11 Code	SDR 17 Code
90	44 242 313	44 241 313
110	44 242 314	44 241 314
125	44 242 315	44 241 315
160	44 242 317	44 241 317
180	44 242 318	44 241 318
225	44 242 320	44 241 320
250	44 242 321	44 241 321
280	44 242 322	44 241 322
315	44 242 323	44 241 323
355	44 242 324	44 241 324



22.5° MITRED ELBOWS

Size (mm)	SDR 11 Code	SDR 17 Code
90	44 317 313	44 316 313
110	44 317 314	44 316 314
125	44 317 315	44 316 315
160	44 317 317	44 316 317
180	44 317 318	44 316 318
225	44 317 320	44 316 320
250	44 317 321	44 316 321
280	44 317 322	44 316 322
315	44 317 323	44 316 323
355	44 317 324	44 316 324



11.25° MITRED ELBOWS

Size (mm)	SDR 11 Code	SDR 17 Code
90	44 298 313	44 297 313
110	44 298 314	44 297 314
125	44 298 315	44 297 315
160	44 298 317	44 297 317
180	44 298 318	44 297 318
225	44 298 320	44 297 320
250	44 298 321	44 297 321
280	44 298 322	44 297 322
315	44 298 323	44 297 323
355	44 298 324	44 297 324

Protecta-Line mechanical fittings

For contaminated land



COUPLERS

Size (mm)	SDR	Product Code
63	11	PM 110 311
	17	PM 100 313
90	17	PM 109 313
	11	PM 100 314
110	17	PM 109 314
	11	PM 100 315
125	17	PM 109 315
	11	PM 100 317
160	17	PM 109 317
	11	PM 100 318
180	17	PM 109 318



EQUAL TEES

Size (mm)	SDR	Product Code
63	11	PM 221 311
	17	PM 222 313
90	17	PM 220 313
	11	PM 222 314
110	17	PM 220 314
	11	PM 222 315
125	17	PM 220 315
	11	PM 222 317
160	17	PM 220 317
	11	PM 222 318
180	17	PM 220 318



REPAIR COUPLERS

Size (mm)	SDR	Product Code
63	11	PM 246 311
	17	PM 246 313
90	17	PM 245 313
	11	PM 246 314
110	17	PM 245 314
	11	PM 246 315
125	17	PM 245 315
	11	PM 246 317
160	17	PM 245 317
	11	PM 246 318
180	17	PM 245 318



STUB FLANGE ADAPTORS

Size (mm)	SDR	Product Code
63 x DN50	11	PM 227 311
63 x DN80	11	PM 228 311
90 x DN80	11	PM 228 313
PN16	17	PM 226 313
110 x DN100	11	PM 228 314
PN16	17	PM 226 314
125 x DN100	11	PM 228 315
PN16	17	PM 226 315
160 x DN150	11	PM 228 317
PN16	17	PM 226 317
180 x DN150	11	PM 228 318
PN16	17	PM 226 318



90° ELBOWS

Size (mm)	SDR	Product Code
63	11	PM 209 311
	17	PM 210 313
90	17	PM 208 313
	11	PM 210 314
110	17	PM 208 314
	11	PM 210 315
125	17	PM 208 315
	11	PM 210 317
160	17	PM 208 317
	11	PM 210 318
180	17	PM 208 318



45° ELBOWS

Size (mm)	SDR	Product Code
63	11	PM 215 311
	17	PM 216 313
90	17	PM 214 313
	11	PM 216 314
110	17	PM 214 314
	11	PM 216 315
125	17	PM 214 315
	11	PM 216 317
160	17	PM 214 317
	11	PM 216 318
180	17	PM 214 318



REDUCERS

Size (mm)	SDR	Product Code
90 x 63	11	PM 441 459
90 x 63*	17 to 11	PM 442 459
110 x 90	11	PM 441 483
	17	PM 440 483
125 x 110	11	PM 441 493
	17	PM 440 493
160 x 125	11	PM 441 504
	17	PM 440 504
180 x 125	17	PM 440 505

* Transition reducer from 90mm SDR 17 to 63mm SDR 11

For info on approvals and standards please refer our website alixis.co.uk/Protecta-Line

For info on approvals and standards please refer our website alixis.co.uk/Protecta-Line

Protecta-Line mechanical fittings

For contaminated land



FLANGED BRANCH TEES

Size (mm)	SDR	Product Code
90 x DN80 PN16	11	PM 351 313
	17	PM 363 313
110 x DN80 PN16	11	PM 351 314
	17	PM 363 314
125 x DN80 PN16	17	PM 363 315
	17	PM 363 317
160 x DN80 PN16	17	PM 363 318
	17	PM 363 318
90 x DN100 PN16	11	PM 352 313
	17	PM 364 313
110 x DN100 PN16	11	PM 352 314
	17	PM 364 314
125 x DN100 PN16	17	PM 364 315
	17	PM 364 317
180 x DN100 PN16	17	PM 364 318
	17	PM 364 318
160 x DN150 PN16	17	PM 365 317
	17	PM 365 318



DUCK FOOT BENDS

Size (mm)	SDR	Product Code
63 x DN80 PN16	11	PM 384 459
	17	PM 384 313
90 x DN80 PN16	17	PM 385 313
	17	PM 385 313
110 x DN80 PN16	11	PM 384 483
	17	PM 385 483
125 x DN80 PN16	17	PM 385 484
	17	PM 385 484
160 x DN80 PN16	17	PM 385 486
	17	PM 385 486
180 x DN80 PN16	17	PM 385 487
	17	PM 385 487

Protecta-Line ferrule off-takes

For contaminated land



25MM AND 32MM SELF-TAPPING FERRULE OFF-TAKES

Size (mm)	Code	SDR
63 x 25	44 763 412	11
90-125 x 25	44 763 393	11*/17
160-180 x 25	44 763 397	11*/17
225 x 25	44 763 400	17**
250 x 25	44 763 401	17**
280 x 25	44 763 402	17**
315 x 25	44 763 403	11/17
355 x 25	44 763 404	11/17
63 x 32	44 763 415	11
90-125 x 32	44 763 417	11*/17
160-180 x 32	44 763 421	11*/17
225 x 32	44 763 424	17**
250 x 32	44 763 425	17**
280 x 32	44 763 426	17**
315 x 32	44 763 427	11/17
355 x 32	44 763 428	11/17

Protecta-Line ferrules are tested to a continuous operating pressure of 16 bar at 20°C.

* An additional cutter is required when ferrules are installed on SDR11 125mm and 180mm Protecta-Line pipe. For further information, please contact us on +44 (0)330 111 4233.

** SDR17 ferrules 225mm, 250mm and 280mm can be installed on SDR11 Protecta-Line pipe when a 25mm (product code: 44794005) or 32mm (product code: 44794006) pre-cutter is used to assist with cutting through SDR11 Protecta-Line pipe.



DUCTILE IRON FERRULE

Size (mm x inches)	Product Code
25 x ¾ MI	44 762 407



PROTECTA-LINE PRE-CUTTERS (for use with 25mm and 32mm off-takes)

Size (mm)	Code
25mm	44 794 005
32mm	44 794 006

Protecta-Line ferrule off-takes

For contaminated land



63MM FERRULE OFF-TAKES*

Size (mm)	Code	SDR
90 x 63	44 763 459	11/17
110 x 63	44 763 460	11/17
125 x 63	44 763 461	11/17
160 x 63	44 763 463	11/17
180 x 63	44 763 464	11/17
225 x 63	44 763 466	11/17
250 x 63	44 763 467	11/17
280 x 63	44 763 468	11/17
315 x 63	44 763 469	11/17
355 x 63	44 763 470	11/17

Protecta-Line MI end connector is supplied with the ferrule

*Must be installed with the compatible drill head with a 44mm cutter (Part code 44794008) and the liner head (part code 44794009)



90° GUNMETAL ELBOWS

Size (inch x inch)	Product Code
2" MI x 2" FI	44 996 050



DRILL AND LINER TOOL HEADS (for use with 63mm Off-Takes)

Description	Code
Protecta-Line SS strap 2" drill head	44 794 008
Protecta-Line SS strap 2" liner insertion head	44 794 009
Protecta-Line SS strap 44mm cutter and liner insert kit	44 794 020*
Protecta-Line drill/liner head o-ring kit	44 996 062

A kit including a 44mm cutter and liner insert to use for the conversion of the last generation of Protecta-Line drill head and liner head that was used with Protecta-Line gunmetal ferrules, which are now discontinued

Accessories



ELECTROFUSION WIPES

Description	Product Code
Electrofusion iso-propyl Alcohol Wipes 100% (100 per tub)	53 996 603

Protecta-Line Adjusta™ boundary box

Boundary boxes/Lids as separate accessories/Accessories



PROTECTA-LINE ADJUSTA BOUNDARY BOX

Product code	Height (mm)		Lid	Tether	Base	Type
	Min	Max				
LUBA001P	570	790	Water	None	Standard	Standard
LUBA002P	660	870	Water	None	Standard	Slope
LUBA003P	570	790	Water	None	Standard	Square cowl
LUBA004P	640	855	Water	Tether	Standard	Surface box



SLOPE ADJUSTA

Product code

LUBA0018



SQUARE COWL

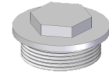
Product code

LUBA1073



SURFACE BOX

Product code	Lid	Tether	Other
LUBA0043	None	None	-
LUBA0056	Water	None	Lid/Plate assembly with keyhole
LUBA0115	Water	None	Location plate with keyhole
LUBA1036	Water	Tether	Lid/Plate assembly with keyhole



BLANKING CAP + O'RING

Product code

LUBA0037



HEIGHT ADJUSTMENT TOOL

Product code

LUBM0093



ADJUSTA BOX FROST PLUG (185mm)

Product code

LUBM0123



LID LIFTING TOOL FOR KEYHOLE

Product code

LUBM1004

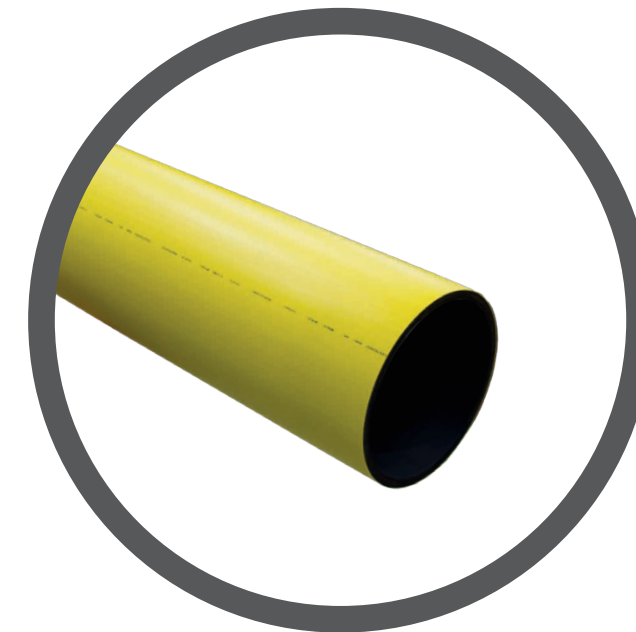
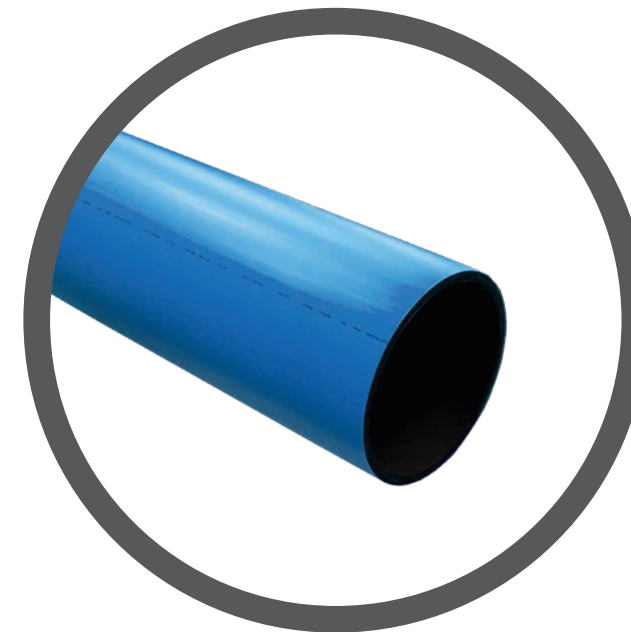


ADJUSTA LID LIFTING TOOL NONE KEYHOLE

Product code

LUBM1036

4 GPS



GPS PE Blue

Pipe for potable water applications



STICKS SDR 11

Size (mm)	Length (m)	Product Code
50	6	51 512 310
63	6	51 513 311
75	6	21 512 312
	12	21 527 312
90	6	21 512 313
	12	21 527 313
110	6	21 512 314
	12	21 527 314
125	6	21 512 315
	12	21 527 315
160	6	21 512 317
	12	21 527 317
180	6	21 512 318
	12	21 527 318
200	6	21 512 319
	12	21 527 319
225	6	21 512 320
	12	21 527 320
250	6	21 512 321
	12	21 527 321
280	6	21 512 322
	12	21 527 322
315	6	21 512 323
	12	21 527 323
355	6	21 512 324
	12	21 527 324
400	6	21 512 325
	12	21 527 325
450	6	21 512 326
	12	21 527 326
500	6	21 512 327
	12	21 527 327
560	6	21 512 328
	12	21 527 328
630	6	21 512 329
	12	21 527 329
710	6	21 512 330
	12	21 527 330

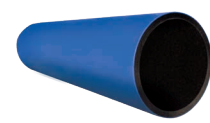


COILS SDR 9

Size (mm)	Length (m)	Product Code
20	25	51 558 306
	50	51 559 306
	100	51 560 306
	150	51 561 306

COILS SDR 11

Size (mm)	Length (m)	Product Code
25	25	51 558 307
	50	51 559 307
	100	51 560 307
	150	51 561 307
32	25	51 558 308
	50	51 559 308
	100	51 560 308
	150	51 561 308
50	25	51 558 310
	50	51 559 310
	100	51 560 310
	150	51 561 310
63	25	51 558 311
	50	51 559 311
	100	51 560 311
	150	51 561 311
75	50	21 559 312
	100	21 560 312
	50	21 559 313
	100	21 560 313
90	50	21 559 314
	100	21 560 314
	50	21 559 315
	100	21 560 315
110	50	21 560 314
	100	21 560 314
	50	21 559 315
	100	21 560 315
125	50	21 559 315
	100	21 560 315
	50	21 559 317
	100	21 560 317
160	50	21 559 318
	100	21 560 317
	50	21 559 318
	100	21 560 318
180	50	21 559 318
	100	21 560 318



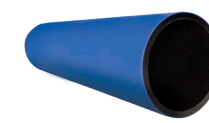
STICKS SDR 17

Size (mm)	Length (m)	Product Code
75	6	21 506 312
	12	21 507 312
90	6	21 506 313
	12	21 507 313
110	6	21 506 314
	12	21 507 314
125	6	21 506 315
	12	21 507 315
160	6	21 506 317
	12	21 507 317
180	6	21 506 318
	12	21 507 318
200	6	21 506 319
	12	21 507 319
225	6	21 506 320
	12	21 507 320
250	6	21 506 321
	12	21 507 321
280	6	21 506 322
	12	21 507 322
315	6	21 506 323
	12	21 507 323
355	6	21 506 324
	12	21 507 324
400	6	21 506 325
	12	21 507 325
450	6	21 506 326
	12	21 507 326
500	6	21 506 327
	12	21 507 327
560	6	21 506 328
	12	21 507 328
630	6	21 506 329
	12	21 507 329
710	6	21 506 330
	12	21 507 330
800	6	21 506 332
	12	21 507 332

For info on approvals and standards please refer to our website alixis.co.uk/GPSBlue

GPS PE Blue

Pipe for potable water applications



STICKS SDR 21

Size (mm)	Length (m)	Product Code
160	6	21 519 317
	12	21 528 317
180	6	21 519 318
	12	21 528 318
200	6	21 519 319
	12	21 528 319
225	6	21 519 320
	12	21 528 320
250	6	21 519 321
	12	21 528 321
280	6	21 519 322
	12	21 528 322
315	6	21 519 323
	12	21 528 323
355	6	21 519 324
	12	21 528 324
400	6	21 519 325
	12	21 528 325
450	6	21 519 326
	12	21 528 326
500	6	21 519 327
	12	21 528 327
560	6	21 519 328
	12	21 528 328
630	6	21 519 329
	12	21 528 329
710	6	21 519 330
	12	21 528 330
800	6	21 519 332
	12	21 528 332
900	6	21 519 333
	12	21 528 333
1000	6	21 519 334
	12	21 528 334
1200	6	21 519 335
	12	21 528 335



COILS SDR 17

Size (mm)	Length (m)	Product Code
75	50	21 548 312
	100	21 549 312
90	50	21 548 313
	100	21 549 313
110	50	21 548 314
	100	21 549 314
125	50	21 548 315
	100	21 549 315
160	50	21 548 317
	100	21 549 317
180	50	21 548 318
	100	21 549 318

GPS PE Blue 3^C & 3^{CTH}

For potable water applications



3^C - Clean, capped coils for installation without pre-chlorination
3^{CTH} - Clean, capped coils with towing head for installation without pre-chlorination

COILS SDR 11

Size (mm)	Length (m)	3 ^C Product Code	3 ^{CTH} Product Code
32	50	51 845 308	-
	100	51 860 308	-
63	50	51 845 311	51 850 311
	100	51 860 311	51 852 311
	50	21 845 313	21 850 313
	100	21 860 313	21 852 313
90	50	21 846 314	21 853 314
	75	21 847 313	21 854 313
	100	21 849 313	21 855 313
	150	21 849 314	21 855 314
110	50	21 846 315	21 853 315
	75	21 847 315	21 854 315
	100	21 849 315	21 855 315
	150	21 849 316	21 855 316
125	50	21 846 317	21 853 317
	75	21 847 317	21 854 317
	100	21 849 317	21 855 317
	150	21 849 318	21 855 318
160	50	21 845 317	21 850 317
	75	21 862 317	21 851 317
	100	21 860 317	21 852 317
	150	21 845 318	21 850 318
180	75	21 862 318	21 851 318
	100	21 860 318	21 852 318

COILS SDR 17

Size (mm)	Length (m)	3 ^C Product Code	3 ^{CTH} Product Code
90	50	21 846 313	21 853 313
	75	21 847 313	21 854 313
110	50	21 846 314	21 853 314
	75	21 847 314	21 854 314
	100	21 849 314	21 855 314
	150	21 849 315	21 855 315
125	50	21 846 315	21 853 315
	75	21 847 315	21 854 315
	100	21 849 315	21 855 315
	150	21 849 316	21 855 316
160	50	21 846 317	21 853 317
	75	21 847 317	21 854 317
	100	21 849 317	21 855 317
	150	21 849 318	21 855 318
180	50	21 845 318	21 850 318
	75	21 862 318	21 851 318
	100	21 860 318	21 852 318

For info on approvals and standards please refer to our website alixis.co.uk/GPSBlue

GPS PE Black

Pipe for raw water and sewage applications



STICKS SDR 11

Size (mm)	Length (m)	Product Code
50	6	50 512 310
63	6	50 513 311
75	6	40 512 312
	12	40 527 312
90	6	40 512 313
	12	40 527 313
110	6	40 512 314
	12	40 527 314
125	6	40 512 315
	12	40 527 315
160	6	40 512 317
	12	40 527 317
180	6	40 512 318
	12	40 527 318
200	6	40 512 319
	12	40 527 319
225	6	40 512 320
	12	40 527 320
250	6	40 512 321
	12	40 527 321
280	6	40 512 322
	12	40 527 322
315	6	40 512 323
	12	40 527 323
355	6	40 512 324
	12	40 527 324
400	6	40 512 325
	12	40 527 325
450	6	40 512 326
	12	40 527 326
500	6	40 512 327
	12	40 527 327
560	6	40 512 328
	12	40 527 328
630	6	40 512 329
	12	40 527 329
710	6	40 512 330
	12	40 527 330



COILS SDR 9

Size (mm)	Length (m)	Product Code
20	25	50 558 306
	50	50 559 306
	100	50 560 306
150	50 561 306	

COILS SDR 11

Size (mm)	Length (m)	Product Code
25	25	50 558 307
	50	50 559 307
	100	50 560 307
	150	50 561 307
32	25	50 558 308
	50	50 559 308
	100	50 560 308
	150	50 561 308
50	25	50 558 310
	50	50 559 310
	100	50 560 310
	150	50 561 310
63	25	50 558 311
	50	50 559 311
	100	50 560 311
	150	50 561 311
75	50	40 559 312
	100	40 560 312
90	50	40 559 313
	100	40 560 313
110	50	40 559 314
	100	40 560 314
125	50	40 559 315
	100	40 560 315
160	50	40 559 317
	100	40 560 317
180	50	40 559 318
	100	40 560 318

For info on approvals and standards please refer to our website alixis.co.uk/GPSBlack



STICKS SDR 17

Size (mm)	Length (m)	Product Code
90	6	40 506 313
	12	40 507 313
110	6	40 506 314
	12	40 507 314
125	6	40 506 315
	12	40 507 315
160	6	40 506 317
	12	40 507 317
180	6	40 506 318
	12	40 507 318
200	6	40 506 319
	12	40 507 319
225	6	40 506 320
	12	40 507 320
250	6	40 506 321
	12	40 507 321
280	6	40 506 322
	12	40 507 322
315	6	40 506 323
	12	40 507 323
355	6	40 506 324
	12	40 507 324
400	6	40 506 325
	12	40 507 325
450	6	40 506 326
	12	40 507 326
500	6	40 506 327
	12	40 507 327
560	6	40 506 328
	12	40 507 328
630	6	40 506 329
	12	40 507 329
710	6	40 506 330
	12	40 507 330
800	6	40 506 332
	12	40 507 332
900	6	40 506 333
	12	40 507 333



COILS SDR 17

Size (mm)	Length (m)	Product Code
75	50	40 548 312
	100	40 549 312
90	50	40 548 313
	100	40 549 313
110	50	40 548 314
	100	40 549 314
125	50	40 548 315
	100	40 549 315
160	50	40 548 317
	100	40 549 317
180	50	40 548 318
	100	40 549 318

GPS PE Black

Pipe for raw water and sewage applications



STICKS SDR 21

Size (mm)	Length (m)	Product Code
160	6	40 519 317
	12	40 529 317
180	6	40 519 318
	12	40 529 318
200	6	40 519 319
	12	40 529 319
225	6	40 519 320
	12	40 529 320
250	6	40 519 321
	12	40 529 321
280	6	40 519 322
	12	40 529 322
315	6	40 519 323
	12	40 529 323
355	6	40 519 324
	12	40 529 324
400	6	40 519 325
	12	40 529 325
450	6	40 519 326
	12	40 529 326
500	6	40 519 327
	12	40 529 327
560	6	40 519 328
	12	40 529 328
630	6	40 519 329
	12	40 529 329
710	6	40 519 330
	12	40 529 330
800	6	40 519 332
	12	40 529 332
900	6	40 519 333
	12	40 529 333
1000	6	40 519 334
	12	40 529 334
1200	6	40 519 335
	12	40 529 335

STICKS SDR 26

Size (mm)	Length (m)	Product Code
160	6	40 518 317
	12	40 528 317
180	6	40 518 318
	12	40 528 318
200	6	40 518 319
	12	40 528 319
225	6	40 518 320
	12	40 528 320
250	6	40 518 321
	12	40 528 321
280	6	40 518 322
	12	40 528 322
315	6	40 518 323
	12	40 528 323
355	6	40 518 324
	12	40 528 324
400	6	40 518 325
	12	40 528 325
450	6	40 518 326
	12	40 528 326
500	6	40 518 327
	12	40 528 327
560	6	40 518 328
	12	40 528 328
630	6	40 518 329
	12	40 528 329
710	6	40 518 330
	12	40 528 330
800	6	40 518 332
	12	40 528 332
900	6	40 518 333
	12	40 528 333
1000	6	40 518 334
	12	40 528 334
1200	6	40 518 335
	12	40 528 335

For info on approvals and standards please refer to our website alixis.co.uk/GPSBlack

GPS PE Yellow

Pipe for low and medium pressure gas applications



STICKS SDR 11

Size (mm)	Length (m)	Product Code
63	6	52 512 311
	12	25 526 313
90	12	25 527 313
	6	25 511 315
125	12	25 526 315
	6	25 511 316
140	12	25 526 316
	6	25 511 318
180	12	25 526 318
	6	25 511 321
250	12	25 512 323
	6	25 512 324
315	12	25 527 323
	6	25 512 324
355	12	25 527 324
	6	25 512 325
400	12	25 527 325
	6	25 511 325

STICKS SDR 17.6

Size (mm)	Length (m)	Product Code
90	6	25 511 313
	12	25 526 313
125	6	25 511 315
	12	25 526 315
140	6	25 511 316
	12	25 526 316
180	6	25 511 318
	12	25 526 318
250	6	25 511 321
	12	25 526 321
315	6	25 511 323
	12	25 526 323
355	6	25 511 324
	12	25 526 324
400	6	25 511 325
	12	25 526 325



STICKS SDR 13.6

Size (mm)	Length (m)	Product Code
63	6	52 576 311
75	6	25 576 312

For info on approvals and standards please refer to website alixis.co.uk/GPSYellow

GPS PE Yellow

Pipe for low and medium pressure gas applications



STICKS SDR 21

Size (mm)	Length (m)	Product Code
250	6	29 519 321
	12	29 539 321
280	6	29 519 322
	12	29 539 322
315	6	29 519 323
	12	29 539 323
355	6	29 519 324
	12	29 539 324
400	6	29 519 325
	12	29 539 325
450	6	29 519 326
	12	29 539 326
500	6	29 519 327
	12	29 539 327
560	6	29 519 328
	12	29 539 328
630	6	29 519 329
	12	29 539 329
710	6	29 519 330
	12	29 539 330
800	6	29 519 332
	12	29 539 332

COILS SDR 11

Size (mm)	Length (m)	Product Code
16	50	58 559 305
	100	52 559 306
20	50	52 559 307
	100	52 560 306
25	50	52 559 308
	100	52 560 307
32	50	52 559 308
	100	52 560 308
40	150	52 561 308
	100	58 560 309
50	100	58 560 301
	150	58 561 301
63	50	52 559 311
	100	52 560 311
90	50	25 559 313
	100	25 560 313
125	50	25 559 315
	100	25 560 315
180	50	25 559 318
	100	25 560 318

COILS SDR 13.6

Size (mm)	Length (m)	Product Code
63	50	52 577 311
	100	52 578 311
75	150	52 579 311
	50	25 577 312
100	100	25 578 312



COILS SDR 17.6

Size (mm)	Length (m)	Product Code
90	50	25 569 313
	100	25 570 313
125	50	25 569 315
	100	25 570 315
140	50	25 569 316
	100	25 570 316
180	50	25 569 318
	100	25 570 318

GPS PE Orange

Pipe for intermediate pressure gas applications



STICKS SDR 11

Size (mm)	Length (m)	Product Code
63	6	48 512 311
	6	48 512 312
75	12	48 527 312
	6	48 512 313
90	12	48 527 313
	6	48 512 315
125	12	48 527 315
	6	48 512 318
180	12	48 527 318
	6	48 512 321
250	12	48 527 321
	6	48 512 323
315	12	48 527 323
	6	48 512 324
355	12	48 527 324
	6	48 512 325
400	12	48 527 325
	6	48 512 326
450	12	48 527 326
	6	48 512 327
500	12	48 527 327
	6	48 512 328
560	12	48 527 328
	6	48 512 329
630	12	48 527 329

COILS SDR 11

Size (mm)	Length (m)	Product Code
63	50	48 559 311
	100	48 560 311
75	50	48 559 312
	100	48 560 312
90	50	48 559 313
	100	48 560 313
125	50	48 559 315
	100	48 560 315
180	50	48 559 318
	100	48 560 318

For info on approvals and standards please refer to website alixis.co.uk/GPSYellow

For info on approvals and standards please refer to website alixis.co.uk/GPSYellow

GPS PE White

Pipe for above ground applications

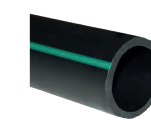
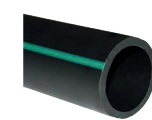


Not suitable for gas applications



Enviro-Line

For rainwater harvesting, grey water and irrigation applications



STICKS SDR 11

Size (mm)	Length (m)	Product Code
180	6	27 512 318
	12	27 527 318
200	6	27 512 319
	12	27 527 319
225	6	27 512 320
	12	27 527 320
250	6	27 512 321
	12	27 527 321
280	6	27 512 322
	12	27 527 322
315	6	27 512 323
	12	27 527 323
355	6	27 512 324
	12	27 527 324
400	6	27 512 325
	12	27 527 325
450	6	27 512 326
	12	27 527 326
500	6	27 512 327
	12	27 527 327
560	6	27 512 328
	12	27 527 328
630	6	27 512 329
	12	27 527 329

STICKS SDR 17

Size (mm)	Length (m)	Product Code
180	6	27 506 318
	12	27 507 318
200	6	27 506 319
	12	27 507 319
225	6	27 506 320
	12	27 507 320
250	6	27 506 321
	12	27 507 321
280	6	27 506 322
	12	27 507 322
315	6	27 506 323
	12	27 507 323
355	6	27 506 324
	12	27 507 324
400	6	27 506 325
	12	27 507 325
450	6	27 506 326
	12	27 507 326
500	6	27 506 327
	12	27 507 327
560	6	27 506 328
	12	27 507 328
630	6	27 506 329
	12	27 507 329

STICKS SDR 21

Size (mm)	Length (m)	Product Code
180	6	27 519 318
	12	27 539 318
225	6	27 519 320
	12	27 539 320
250	6	27 519 321
	12	27 539 321
280	6	27 519 322
	12	27 539 322
315	6	27 519 323
	12	27 539 323
355	6	27 519 324
	12	27 539 324
400	6	27 519 325
	12	27 539 325
450	6	27 519 326
	12	27 539 326
500	6	27 519 327
	12	27 539 327
560	6	27 519 328
	12	27 539 328
630	6	27 519 329
	12	27 539 329

STICKS SDR 26

Size (mm)	Length (m)	Product Code
180	6	27 518 318
	12	27 528 318
225	6	27 518 320
	12	27 528 320
250	6	27 518 321
	12	27 528 321
280	6	27 518 322
	12	27 528 322
315	6	27 518 323
	12	27 528 323
355	6	27 518 324
	12	27 528 324
400	6	27 518 325
	12	27 528 325
450	6	27 518 326
	12	27 528 326
500	6	27 518 327
	12	27 528 327
560	6	27 518 328
	12	27 528 328
630	6	27 518 329
	12	27 528 329

STICKS SDR 11

Size (mm)	Length (m)	Product Code
63	6	23 512 311
	6	23 512 313
90	12	23 527 313
	6	23 512 314
110	12	23 527 314
	6	23 512 315
125	12	23 527 315
	6	23 512 317
160	12	23 527 317
	6	23 512 318
180	12	23 527 318
	6	23 512 319
200	12	23 527 319
	6	23 512 320
225	12	23 527 320
	6	23 512 321
250	12	23 527 321
	6	23 512 322
280	12	23 527 322
	6	23 512 323
315	12	23 527 323
	6	23 512 324
355	12	23 527 324

COILS SDR 11

Size (mm)	Length (m)	Product Code
25	50	23 559 307
	100	23 560 307
32	50	23 559 308
	100	23 560 308
40	50	23 559 309
	100	23 560 309
50	50	23 559 310
	100	23 560 310
63	25	23 558 311
	50	23 559 311
	100	23 560 311
90	50	23 559 313
	100	23 560 313
110	50	23 559 314
	100	23 560 314
125	50	23 559 315
	100	23 560 315
160	50	23 559 317
	100	23 560 317
180	50	23 559 318
	100	23 560 318

STICKS SDR 17

Size (mm)	Length (m)	Product Code
90	6	23 506 313
	12	23 507 313
110	6	23 506 314
	12	23 507 314
125	6	23 506 315
	12	23 507 315
160	6	23 506 317
	12	23 507 317
180	6	23 506 318
	12	23 507 318
200	6	23 506 319
	12	23 507 319
225	6	23 506 320
	12	23 507 320
250	6	23 506 321
	12	23 507 321
280	6	23 506 322
	12	23 507 322
315	6	23 506 323
	12	23 507 323
355	6	23 506 324
	12	23 507 324

COILS SDR 17

Size (mm)	Length (m)	Product Code
90	50	23 548 313
	100	23 549 313
110	50	23 548 314
	100	23 549 314
125	50	23 548 315
	100	23 549 315
160	50	23 548 317
	100	23 549 317
180	50	23 548 318
	100	23 549 318

White pipe coils up to 180mm can be made to order subject to a minimum order value – please contact our customer services team for further information.

Frialen electrofusion fittings



Frialen electrofusion fittings

For all applications



COUPLERS – Removable Centre Stop

Size (mm)	SDR	Product Code
20	11	FL 612 680
25	11	FL 612 681
32	11/17	FL 612 682
40	11/17	FL 612 683
50	11/17	FL 612 684
63	11/17	FL 612 685
75	11/17	FL 612 686
90	11/17	FL 612 687
110	11/17	FL 612 688
125	11/17	FL 612 689
140	11/17	FL 612 690
160	11/17	FL 612 691



FRIAFIT COUPLERS – Slideover

Size (mm)	SDR	Product Code
110	17	FF 680 001
125	17	FF 680 013
160	17	FF 680 002
180	17	FF 680 003
200	17	FF 680 004
225	17	FF 680 005
250	17	FF 680 006
280	17	FF 680 007



COUPLERS – Slideover SDR11 and SDR17

Size (mm)	SDR	Product Code
180	11	FL 612 672
200	11	FL 612 673
225	11	FL 612 674
250	11	FL 617 278
280	11	FL 617 279
315	11	FL 612 670
355	11	FL 615 074
400	11	FL 615 075
450	11	FL 615 076
500	11	FL 615 124
560	11	FL 613 312
560	17	FL 615 706
630	11	FL 616 269
630	17	FL 615 726
710	11	FL 616 313
710	17	FL 615 994
800	11	FL 616 314
800	17	FL 616 290
900	17	FL616345
1000	17	FL616403
1200	17	FL616416



COUPLERS – Slideover SDR 7.4

Size (mm)	SDR	Product Code
90	7.4	FL 616 270
110	7.4	FL 615 737
125	7.4	FL 616 272
140	7.4	FL 616 273
160	7.4	FL 616 274
180	7.4	FL 616 282
200	7.4	FL 616 283
225	7.4	FL 616 284
250	7.4	FL 616 285
315	7.4	FL 616 287
355	7.4	FL 616 288



COUPLERS – Slideover SDR 9

Size (mm)	SDR	Product Code
400	9	FL 615 075
450	9	FL 615 076
500	9	FL 615 124
560	9	FL 616 312
630	9	FL 616 269



LONG COUPLERS – Removable Centre Stop

Size (mm)	SDR	Product Code
32	11	FL 615 736
40	11	FL 615 737
50	11	FL 615 608
63	11	FL 615 738

Frialen electrofusion fittings

For all applications



REDUCERS

Size (mm)	SDR	Product Code
32 x 20	11	FL 615 386
32 x 25	11	FL 615 502
40 x 20	11	FL 615 387
40 x 32	11	FL 615 388
50 x 20	11	FL 612 069
50 x 32	11	FL 612 070
50 x 40	11	FL 612 071
63 x 32	11	FL 615 389
63 x 40	11	FL 615 390
63 x 50	11	FL 612 072
90 x 50	11	FL 615 391
90 x 63	11	FL 615 392
110 x 63	11	FL 615 393
110 x 90	11	FL 615 693
125 x 90	11	FL 615 694
125 x 110	11	FL 616 510
160 x 110	11	FL 615 739
180 x 125	11	FL 616 511
225 x 160	11	FL 616 356



REDUCERS

Size (mm)	SDR	Product Code
250 x 180	11	FL 402 529
315 x 250	11	FL 402 543



UNDER CLAMP SPIGOT SADDLES

Size (mm)	SDR	Product Code
63 x 32	11	FL 612 757
63 x 50	11	FL 612 759
75 x 50	11	FL 615 020
90 x 32	11	FL 615 285
90 x 63	11	FL 612 819
110 x 32	11	FL 615 334
110 x 50	11	FL 615 031
110 x 63	11	FL 612 760
110 x 90	11	FL 615 411
125 x 32	11	FL 615 087
125 x 63	11	FL 612 761
125 x 90	11	FL 615 412
125 x 110	11	FL 615 584
160 x 32	11	FL 612 886
160 x 63	11	FL 612 762
160 x 90	11	FL 615 413
160 x 110	11	FL 615 720
160 x 125	11	FL 615 585
180 x 63	11	FL 612 763
180 x 90	11	FL 615 414
180 x 110	11	FL 615 948
180 x 125	11	FL 615 740
200 x 63	11	FL 612 764
225 x 63	11	FL 612 765
225 x 90	11	FL 615 415
225 x 110	11	FL 616 044
225 x 125	11	FL 616 045
225 x 160	11	FL 616 046



TOP LOADING SPIGOT SADDLES

Size (mm)	SDR	Product Code
250-560 x 32	11	FL 615 465
250-560 x 63	11	FL 615 466



EQUAL TEES

Size (mm)	SDR	Product Code
25	11	FL 616 338
32	11	FL 615 719
40	11	FL 615 720
50	11	FL 615 721
63	11	FL 615 722



EQUAL TEES

Size (mm)	SDR	Product Code
75	11	FL 612 165
90	11	FL 612 166
110	11	FL 612 167
125	11	FL 612 168
160	11	FL 615 277
180	11	FL 615 691
200	11	FL 616 266
225	11	FL 615 692



LARGE DIAMETER EQUAL TEES

Size (mm)	SDR	Product Code
250	11	FL 616 412
280	11	FL 616 413
315	11	FL 616 414



REDUCED BRANCH TEES

Size (mm)	SDR	Product Code
32 x 20	11	FL 616 417
40 x 32	11	FL 616 418
50 x 32	11	FL 616 419
50 x 40	11	FL 616 420
63 x 32	11	FL 616 421
63 x 40	11	FL 616 422
63 x 50	11	FL 616 423

For info on approvals and standards please refer to our website alixis.co.uk/Frialen

For info on approvals and standards please refer to our website alixis.co.uk/Frialen

Frialen electrofusion fittings

For all applications



90° ELBOWS

Size (mm)	SDR	Product Code
25	11	FL 612 091
32	11	FL 612 093
40	11	FL 612 095
50	11	FL 612 097
63	11	FL 612 099
75	11	FL 612 101
90	11	FL 612 103
110	11	FL 612 105
125	11	FL 612 107
160	11	FL 615 276
180	11	FL 615 689
200	11	FL 616 265
225	11	FL 615 690



LARGE DIAMETER 90° ELBOWS

Size (mm)	SDR	Product Code
250	11	FL 616 408
280	11	FL 616 409
315	11	FL 616 410



45° ELBOWS

Size (mm)	SDR	Product Code
32	11	FL 612 092
40	11	FL 612 094
50	11	FL 612 096
63	11	FL 612 098
75	11	FL 612 100
90	11	FL 612 102
110	11	FL 612 104
125	11	FL 612 106
160	11	FL 615 275
180	11	FL 615 687
200	11	FL 616 264
225	11	FL 615 688



LARGE DIAMETER 45° ELBOWS

Size (mm)	SDR	Product Code
250	11	FL 616 404
280	11	FL 616 405
315	11	FL 616 406



30° ELBOWS

Size (mm)	SDR	Product Code
90	11	FL 615 272
110	11	FL 615 273
125	11	FL 615 274
160	11	FL 615 340
180	11	FL 616 261
200	11	FL 616 262
225	11	FL 616 263



END CAPS

Size (mm)	SDR	Product Code
20	11	FL 612 025
25	11	FL 612 026
32	11	FL 612 027
40	11	FL 612 028
50	11	FL 612 029
63	11	FL 612 030
75	11	FL 612 031
90	11	FL 612 032
110	11	FL 612 033
125	11	FL 612 034
160	11	FL 612 035
180	11	FL 616 183
200	11	FL 616 184
225	11	FL 616 185



REINFORCING SADDLES

Size (mm)	SDR	Product Code
63	11	FL 612 519



FULL FACED FLANGED BRANCH SADDLES

Size (mm)	SDR	Product Code
110 x 80 PN16	11	FL 616 016
125 x 80 PN16	11	FL 616 017
160 x 80 PN16	11	FL 616 018
180 x 80 PN16	11	FL 616 019
225 x 80 PN16	11	FL 616 020
160 x 100 PN16	11	FL 616 022
225 x 100 PN16	11	FL 616 024

Frialen electrofusion fittings

For all applications



REPAIR & REINFORCING SADDLES

Size (mm)	SDR	Product Code
90	11	FL 615 164
110	11	FL 615 165
125	11	FL 615 166
160	11	FL 615 168
180	11	FL 615 169
200	11	FL 615 170
225	11	FL 615 171



REPAIR SADDLES

Size (mm)	SDR	Product Code
560	17	FL 616 367
630	17	FL 616 368
710	17	FL 616 369
800	17	FL 616 370
900	17	FL 616 371
1000	17	FL 616 372
1200	17	FL 616 379



TOP LOADING REPAIR SADDLES

Size (mm)	SDR	Product Code
250-560	11	FL 615 397



32MM TOP LOADING TAPPING TEES

Size (mm)	SDR	Product Code
63/2" x 32	11	FL 411 415
75 x 32	11	FL 411 416
90/3" x 32	11	FL 411 417
110-140/4" x 32	11	FL 411 419
160-213/6" x 32	11	FL 411 422
225-315 x 32	11	FL 411 427



63MM UNDER CLAMPED PRESSURE TAPPING TEES

Size (mm)	SDR	Product Code
90 x 63	11	FL 612 701
110 x 63	11	FL 612 624
125 x 63	11	FL 612 309
160 x 63	11	FL 612 650
180 x 63	11	FL 612 652
200 x 63	11	FL 612 659
225 x 63	11	FL 612 655



New product design available



63MM TOP LOADING PRESSURE TAPPING TEE

Size (mm)	SDR	Product Code
250-315 x 63	11	FL 615 339



CAP FOR PRESSURE TAPPING TEES

Size (mm)	SDR	Product Code
50	11	FL 612 310

For info on approvals and standards please refer to our website alixis.co.uk/Frialen

For info on approvals and standards please refer to our website alixis.co.uk/Frialen

Frialen electrofusion fittings

For potable water applications only



FULL FACED FLANGED BRANCH TEES

Size (mm)	SDR	Product Code
110 x 80 PN16	11	FL 615 590
125 x 80 PN16	11	FL 615 591
160 x 80 PN16	11	FL 615 592
180 x 80 PN16	11	FL 615 910
225 x 80PN16	17	FL 616 031



TRANSITION COUPLERS PE100/BRASS MALE THREAD

Size (mm x inch)	SDR	Product Code
32 x 1	11	FL 612 712
32 x 1¼	11	FL 612 709
32 x 1½	11	FL 612 698
40 x 1	11	FL 612 721
40 x 1¼	11	FL 612 713
40 x 1½	11	FL 612 718
40 x 2	11	FL 612 725
50 x 1	11	FL 612 719
50 x 1¼	11	FL 612 716
50 x 1½	11	FL 612 714
50 x 2	11	FL 612 706
63 x 1¼	11	FL 612 722
63 x 1½	11	FL 612 717
63 x 2	11	FL 612 715



90° TRANSITION ELBOWS PE100 /BRASS MALE THREAD

Size (mm x inch)	SDR	Product Code
32 x 1	11	FL 612 120
32 x 1½	11	FL 612 140
40 x 1	11	FL 612 127
40 x 1¼	11	FL 612 122
40 x 1½	11	FL 612 121
50 x 1	11	FL 612 119
50 x 1¼	11	FL 612 123
50 x 1½	11	FL 612 124
63 x 1½	11	FL 612 125
63 x 2	11	FL 612 126



TRANSITION COUPLERS PE100/ GUNMETAL FEMALE THREAD

Size (mm x inch)	SDR	Product Code
32 x 1	11	FL 612 595
40 x 1¼	11	FL 612 596
50 x 1½	11	FL 612 692
63 x 1½	11	FL 612 708
63 x 2	11	FL 612 693



DUCK FOOT BENDS

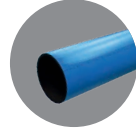
Size (mm)	SDR	Product Code
63 x 80 PN16	11	FL 384 459
90 x 80 PN16	11	FL 384 313
125 x 80 PN16	11	FL 384 484
180 x 80 PN16	11	FL 384 487



FLANGE ADAPTOR KITS

Size (mm)	SDR	Product Code
63 x 50 PN16	11	FL 251 311
90 x 80 PN16	17	FL 250 313
125 x 100 PN16	17	FL 250 315
90 x 100 PN16	17	FL 250 484
160 x 150 PN16	17	FL 250 317
180 x 150 PN16	17	FL 250 318
250 x 250 PN16	17	FL 250 321
250 x 200 PN16	17	FL 250 534
315 x 300 PN16	17	FL 250 323

Water



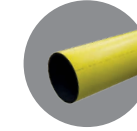
FLANGED BRANCH TEES

Size (mm)	SDR	Product Code
90 x 80 PN16	11	FL 301 313
110 x 80 PN16	11	FL 301 314
125 x 80 PN16	11	FL 301 315
160 x 80 PN16	11	FL 301 317
180 x 80 PN16	11	FL 301 318
90 x 100 PN16	11	FL 302 313
110 x 100 PN16	11	FL 302 314
125 x 100 PN16	11	FL 302 315
160 x 100 PN16	11	FL 302 317
180 x 100 PN16	11	FL 302 318
160 x 150 PN16	11	FL 303 317
180 x 150 PN16	11	FL 303 318

Frialen electrofusion fittings

For low and intermediate pressure gas applications only

Gas



COUPLERS – with excess flow limiters

Size (mm)	SDR	Product Code
32	11	FL 102 308

N.B. For intermediate pressure gas applications only.



REDUCERS – with excess flow limiters

Size (mm)	SDR	Product Code
32 x 25	11	FL 102 409

N.B. For intermediate pressure gas applications only.



63MM TOP LOADING TAPPING TEES

Size (mm)	SDR	Product Code
63 x 63	11	87 996 001
90 x 63	11	58 404 459
125 x 63	11	58 404 461
180 x 63	11	58 404 464
250 x 63	11	58 404 467
315 x 63	11	58 404 469



FLANGE ADAPTOR KITS

Size (mm)	SDR	Product Code
63 x 50 PN16	11	FL 254 311
90 x 80 PN16	17	FL 253 313
125 x 100 PN16	17	FL 253 315
90 x 100 PN16	17	FL 253 484
160 x 150 PN16	17	FL 253 317
180 x 150 PN16	17	FL 253 318
250 x 250 PN16	17	FL 253 321
250 x 200 PN16	17	FL 253 534
315 x 300 PN16	17	FL 253 323



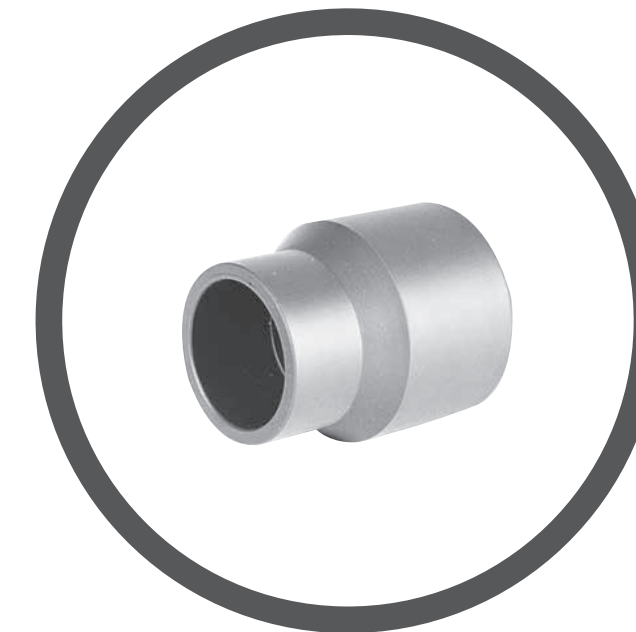
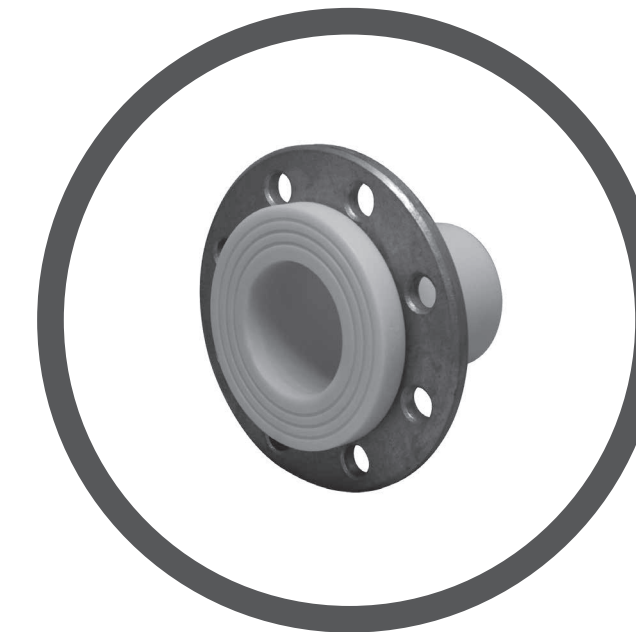
ELECTROFUSION WIPES

	Product Code
Electrofusion iso-propyl Alcohol Wipes 100% (100 per tub)	53 996 603

For info on approvals and standards please refer to our website alixis.co.uk/Frialen

For info on approvals and standards please refer to our website alixis.co.uk/Frialen

Fabricated and Spigot fittings



Fabricated fittings

For potable, raw water and sewage applications



REDUCERS

Size (mm)	SDR 11 Code	SDR 17 Code
90 x 63	XX 323 459	-
110 x 90	XX 323 483	XX 322 483
125 x 63	XX 323 461	-
125 x 90	XX 323 484	XX 322 484
160 x 90	XX 323 486	XX 322 486
160 x 110	XX 323 495	XX 322 495
160 x 125	XX 323 504	XX 322 504
180 x 90	XX 323 487	XX 322 487
180 x 125	XX 323 505	XX 322 505
200 x 160	XX 323 506	XX 322 506
225 x 160	XX 323 507	XX 322 507
250 x 125	XX 323 508	XX 322 508
250 x 180	XX 323 529	XX 322 529
315 x 250	XX 323 543	XX 322 543
315 x 280	XX 323 545	XX 322 545
355 x 125	XX 323 571	XX 322 571
355 x 180	XX 323 532	XX 322 532
355 x 225	XX 323 541	XX 322 541
355 x 250	XX 323 544	XX 322 544
355 x 280	XX 323 546	XX 322 546
355 x 315	XX 323 547	XX 322 547
400 x 180	XX 323 560	XX 322 560
400 x 250	XX 323 563	XX 322 563
400 x 280	XX 323 564	XX 322 564
400 x 315	XX 323 565	XX 322 565
400 x 355	XX 323 566	XX 322 566
450 x 250	XX 323 573	XX 322 573
450 x 280	XX 323 584	XX 322 584
450 x 315	XX 323 574	XX 322 574
450 x 355	XX 323 575	XX 322 575
450 x 400	XX 323 576	XX 322 576
500 x 355	XX 323 579	XX 322 579
500 x 400	XX 323 580	XX 322 580
500 x 450	XX 323 581	XX 322 581
560 x 450	XX 323 586	XX 322 586
560 x 500	XX 323 594	XX 322 594
630 x 500	XX 323 599	XX 322 599
630 x 560	XX 323 595	XX 322 595

90° ELBOWS

Size (mm)	SDR 11 Code	SDR 17 Code
90	XX 309 313	XX 308 313
110	XX 309 314	XX 308 314
125	XX 309 315	XX 308 315
160	XX 309 317	XX 308 317
180	XX 309 318	XX 308 318
200	XX 309 319	XX 308 319
225	XX 309 320	XX 308 320
250	XX 309 321	XX 308 321
280	XX 309 322	XX 308 322
315	XX 309 323	XX 308 323
355	XX 309 324	XX 308 324



45° ELBOWS

Size (mm)	SDR 11 Code	SDR 17 Code
90	XX 315 313	XX 314 313
110	XX 315 314	XX 314 314
125	XX 315 315	XX 314 315
160	XX 315 317	XX 314 317
180	XX 315 318	XX 314 318
200	XX 315 319	XX 314 319
225	XX 315 320	XX 314 320
250	XX 315 321	XX 314 321
280	XX 315 322	XX 314 322
315	XX 315 323	XX 314 323
355	XX 315 324	XX 314 324



EQUAL TEES

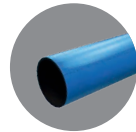
Size (mm)	SDR 11 Code	SDR 17 Code
90	XX 321 313	XX 320 313
110	XX 321 314	XX 320 314
125	XX 321 315	XX 320 315
160	XX 321 317	XX 320 317
180	XX 321 318	XX 320 318
200	XX 321 319	XX 320 319
225	XX 321 320	XX 320 320
250	XX 321 321	XX 320 321
280	XX 321 322	XX 320 322
315	XX 321 323	XX 320 323
355	XX 321 324	XX 320 324
400	XX 321 325	XX 320 325



LARGE DIAMETER EQUAL TEE

Size (mm)	SDR 11 Code	SDR 17 Code
450	XX 321 326	XX 320 326
500	XX 321 327	XX 320 327
560	XX 321 328	XX 320 328
630	XX 321 329	XX 320 329
710	XX 321 330	XX 320 330
800	-	XX 320 332
900	-	XX 320 333
1000	-	XX 320 334
1200	-	XX 320 335

Water

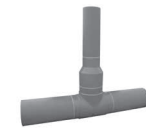


REDUCED BRANCH TEES

Size (mm)	SDR 11 Code	SDR 17 Code
110 x 90	XX 347 314	XX 356 314
125 x 90	XX 347 315	XX 356 315
160 x 90	XX 347 317	XX 356 317
180 x 90	XX 347 318	XX 356 318
200 x 90	XX 347 319	XX 356 319
225 x 90	-	XX 356 320
250 x 90	XX 347 321	XX 356 321
280 x 90	XX 347 322	XX 356 322
315 x 90	XX 347 323	XX 356 323
355 x 90	XX 347 324	XX 356 324
400 x 90	XX 347 325	XX 356 325
180 x 125	XX 348 318	XX 357 318
200 x 125	XX 348 319	XX 357 319
225 x 125	-	XX 357 320
250 x 125	XX 348 321	XX 357 321
280 x 125	XX 348 322	XX 357 322
315 x 125	XX 348 323	XX 357 323
355 x 125	XX 348 324	XX 357 324
400 x 125	XX 348 325	XX 357 325
225 x 180	-	XX 358 320
250 x 180	XX 349 321	XX 358 321
280 x 180	XX 349 322	XX 358 322
315 x 180	XX 349 323	XX 358 323
355 x 180	XX 349 324	XX 358 324
400 x 180	XX 349 325	XX 358 325
315 x 250	XX 335 323	XX 336 323
355 x 250	XX 335 324	XX 336 324
400 x 250	XX 335 325	XX 336 325

Fabricated fittings

For potable, raw water and sewage applications



LARGE DIAMETER REDUCED BRANCH TEES

Size (mm)	SDR 11 Code	SDR 17 Code
450 x 180	XX 349 326	XX 358 326
450 x 250	XX 335 326	XX 336 326
450 x 315	XX 809 326	XX 285 326
500 x 180	XX 349 327	XX 358 327
500 x 250	XX 335 327	XX 336 327
500 x 315	XX 809 327	XX 285 327
630 x 180	XX 349 329	XX 358 329
630 x 250	XX 335 329	XX 336 329
630 x 315	XX 809 329	XX 285 329



END CAPS

Size (mm)	SDR 11 Code	SDR 17 Code
90	XX 332 313	XX 331 313
110	XX 332 314	XX 331 314
125	XX 332 315	XX 331 315
160	XX 332 317	XX 331 317
180	XX 332 318	XX 331 318
200	XX 332 319	XX 331 319
225	XX 332 320	XX 331 320
250	XX 332 321	XX 331 321
280	XX 332 322	XX 331 322
315	XX 332 323	XX 331 323
355	XX 332 324	XX 331 324
400	XX 332 325	XX 331 325
450	XX 332 326	XX 331 326
500	XX 332 327	XX 331 327



FLANGED SHORT BRANCH TEES

Size (mm)	SDR 11 Code	SDR 17 Code
90 x 80 PN16	XX 341 313	XX 310 313
110 x 80 PN16	XX 341 314	XX 310 314
125 x 80 PN16	XX 341 315	XX 310 315
160 x 80 PN16	XX 341 317	XX 310 317
180 x 80 PN16	XX 341 318	XX 310 318
200 x 80 PN16	XX 341 319	XX 310 319
225 x 80 PN16	XX 341 320	XX 310 320
250 x 80 PN16	XX 341 321	XX 310 321
280 x 80 PN16	XX 341 322	XX 310 322
315 x 80 PN16	XX 341 323	XX 310 323
90 x 100 PN16	XX 342 313	XX 311 313
110 x 100 PN16	XX 342 314	XX 311 314
125 x 100 PN16	XX 342 315	XX 311 315
160 x 100 PN16	XX 342 317	XX 311 317
180 x 100 PN16	XX 342 318	XX 311 318
200 x 100 PN16	XX 342 319	XX 311 319
225 x 100 PN16	XX 342 320	XX 311 320
250 x 100 PN16	XX 342 321	XX 311 321
280 x 100 PN16	XX 342 322	XX 311 322
315 x 100 PN16	XX 342 323	XX 311 323
355 x 100 PN16	XX 342 324	XX 311 324
160 x 150 PN16	XX 343 317	XX 312 317
180 x 150 PN16	XX 343 318	XX 312 318
200 x 150 PN16	XX 343 319	XX 312 319
225 x 150 PN16	XX 343 320	XX 312 320
250 x 150 PN16	XX 343 321	XX 312 321
315 x 150 PN16	XX 343 323	XX 312 323
355 x 150 PN16	XX 343 324	XX 312 324



STUB FLANGE ASSEMBLIES

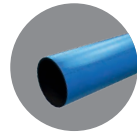
Size (mm)	SDR 11 Code	SDR 17 Code
63 x 50 PN16	51 327 311	-
63 x 80 PN16	51 327 459	-
90 x 80 PN16	XX 327 313	XX 326 313
110 x 100 PN16	XX 327 314	XX 326 314
125 x 100 PN16	XX 327 315	XX 326 315
160 x 150 PN16	XX 327 317	XX 326 317
180 x 150 PN16	XX 327 318	XX 326 318
200 x 200 PN16	XX 327 319	XX 326 319
225 x 200 PN16	XX 327 320	XX 326 320
250 x 250 PN16	XX 327 321	XX 326 321
280 x 250 PN16	XX 327 322	XX 326 322
315 x 300 PN16	XX 327 323	XX 326 323
355 x 350 PN16	XX 327 324	XX 326 324
400 x 400 PN16	XX 327 325	XX 326 325
450 x 450 PN16	XX 327 326	XX 326 326
500 x 500 PN16	XX 327 327	XX 326 327
560 x 600 PN16	XX 327 328	XX 326 328
630 x 600 PN16	XX 327 329	XX 326 329
710 x 700 PN16	XX 327 330	XX 326 330
800 x 800 PN16	-	XX 326 332
900 x 900 PN16	-	XX 326 333
1000 x 1000 PN16	-	XX 326 334
1200 x 1200 PN16	-	XX 326 335



SLIMFLANGE ASSEMBLIES

Size (mm)	SDR 11 Code	SDR 17 Code
250 x 200 PN16	XX 453 321	XX 452 321
315 x 250 PN16	XX 453 323	XX 452 323
355 x 300 PN16	XX 453 324	XX 452 324
400 x 350 PN16	XX 453 325	XX 452 325
450 x 400 PN16	XX 453 326	XX 452 326
500 x 450 PN16	XX 453 327	XX 452 327
560 x 500 PN16	XX 453 328	XX 452 328

Water



SPECIAL FLANGE ASSEMBLIES PN16

Size (mm)	SDR 11 Code	SDR 17 Code
630 x 500 PN16	XX 456 329	XX 455 329
710 x 600 PN16	XX 456 330	XX 455 330
800 x 700 PN16	-	XX 455 332
900 x 800 PN16	-	XX 455 333
1000 x 900 PN16	-	XX 455 334
1200 x 1000 PN16	-	XX 455 335

Note: Replace XX with colour required: Black = 40 Blue = 41

Note: Replace XX with colour required: Black = 40 Blue = 41

Fabricated fittings

For potable, raw water and sewage applications



90° MITRED ELBOWS

Size (mm)	SDR 11 Code	SDR 17 Code	SDR 21 Code
90	XX 244 313	XX 243 313	-
110	XX 244 314	XX 243 314	-
125	XX 244 315	XX 243 315	-
160	XX 244 317	XX 243 317	XX 248 317
180	XX 244 318	XX 243 318	XX 248 318
200	XX 244 319	XX 243 319	XX 248 319
225	XX 244 320	XX 243 320	XX 248 320
250	XX 244 321	XX 243 321	XX 248 321
280	XX 244 322	XX 243 322	XX 248 322
315	XX 244 323	XX 243 323	XX 248 323
355	XX 244 324	XX 243 324	XX 248 324
400	XX 244 325	XX 243 325	XX 248 325
450	XX 244 326	XX 243 326	XX 248 326
500	XX 244 327	XX 243 327	XX 248 327
560	XX 244 328	XX 243 328	XX 248 328
630	XX 244 329	XX 243 329	XX 248 329
710	XX 244 330	XX 243 330	XX 248 330
800	-	XX 243 332	XX 248 332
900	-	XX 243 333	XX 248 333
1000	-	XX 243 334	XX 248 334
1200	-	XX 243 335	XX 248 335



45° MITRED ELBOWS

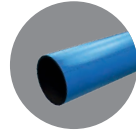
Size (mm)	SDR 11 Code	SDR 17 Code	SDR 21 Code
90	XX 242 313	XX 241 313	-
110	XX 242 314	XX 241 314	-
125	XX 242 315	XX 241 315	-
160	XX 242 317	XX 241 317	XX 247 317
180	XX 242 318	XX 241 318	XX 247 318
200	XX 242 319	XX 241 319	XX 247 319
225	XX 242 320	XX 241 320	XX 247 320
250	XX 242 321	XX 241 321	XX 247 321
280	XX 242 322	XX 241 322	XX 247 322
315	XX 242 323	XX 241 323	XX 247 323
355	XX 242 324	XX 241 324	XX 247 324
400	XX 242 325	XX 241 325	XX 247 325
450	XX 242 326	XX 241 326	XX 247 326
500	XX 242 327	XX 241 327	XX 247 327
560	XX 242 328	XX 241 328	XX 247 328
630	XX 242 329	XX 241 329	XX 247 329
710	XX 242 330	XX 241 330	XX 247 330
800	-	XX 241 332	XX 247 332
900	-	XX 241 333	XX 247 333
1000	-	XX 241 334	XX 247 334
1200	-	XX 241 335	XX 247 335



22½° MITRED ELBOWS

Size (mm)	SDR 11 Code	SDR 17 Code	SDR 21 Code
90	XX 317 313	XX 316 313	-
110	XX 317 314	XX 316 314	-
125	XX 317 315	XX 316 315	-
160	XX 317 317	XX 316 317	XX 246 317
180	XX 317 318	XX 316 318	XX 246 318
200	XX 317 319	XX 316 319	XX 246 319
225	XX 317 320	XX 316 320	XX 246 320
250	XX 317 321	XX 316 321	XX 246 321
280	XX 317 322	XX 316 322	XX 246 322
315	XX 317 323	XX 316 323	XX 246 323
355	XX 317 324	XX 316 324	XX 246 324
400	XX 317 325	XX 316 325	XX 246 325
450	XX 317 326	XX 316 326	XX 246 326
500	XX 317 327	XX 316 327	XX 246 327
560	XX 317 328	XX 316 328	XX 246 328
630	XX 317 329	XX 316 329	XX 246 329
710	XX 317 330	XX 316 330	XX 246 330
800	-	XX 316 332	XX 246 332
900	-	XX 316 333	XX 246 333
1000	-	XX 316 334	XX 246 334
1200	-	XX 316 335	XX 246 335

Water



11¼° MITRED ELBOWS

Size (mm)	SDR 11 Code	SDR 17 Code	SDR 21 Code
90	XX 298 313	XX 297 313	-
110	XX 298 314	XX 297 314	-
125	XX 298 315	XX 297 315	-
160	XX 298 317	XX 297 317	XX 245 317
180	XX 298 318	XX 297 318	XX 245 318
200	XX 298 319	XX 297 319	XX 245 319
225	XX 298 320	XX 297 320	XX 245 320
250	XX 298 321	XX 297 321	XX 245 321
280	XX 298 322	XX 297 322	XX 245 322
315	XX 298 323	XX 297 323	XX 245 323
355	XX 298 324	XX 297 324	XX 245 324
400	XX 298 325	XX 297 325	XX 245 325
450	XX 298 326	XX 297 326	XX 245 326
500	XX 298 327	XX 297 327	XX 245 327
560	XX 298 328	XX 297 328	XX 245 328
630	XX 298 329	XX 297 329	XX 245 329
710	XX 298 330	XX 297 330	XX 245 330
800	-	XX 297 332	XX 245 332
900	-	XX 297 333	XX 245 333
1000	-	XX 297 334	XX 245 334
1200	-	XX 297 335	XX 245 335

Fabricated fittings

For low and intermediate pressure gas applications

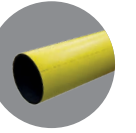


REDUCERS

Size (mm)	SDR 11 Code	SDR 17.6 Code	SDR 21 Code	SDR 11 Code
90 x 63	58 323 459	58 322 459	-	48 323 459
125 x 63	58 323 461	58 322 461	-	48 323 461
125 x 90	58 323 484	58 322 484	-	48 323 484
180 x 90	58 323 487	58 322 487	-	48 323 487
180 x 125	58 323 505	58 322 505	-	48 323 505
200 x 160	58 323 506	58 322 506	-	48 323 506
225 x 160	58 323 507	58 322 507	-	48 323 507
250 x 125	-	-	29 740 508	48 323 508
250 x 180	-	-	29 740 529	48 740 529
315 x 250	-	-	29 740 543	48 740 543
315 x 280	-	-	29 740 545	48 740 545
355 x 125	-	-	29 740 571	48 740 571
355 x 180	-	-	29 740 532	48 740 532
355 x 225	-	-	29 740 541	48 740 541
355 x 250	-	-	29 740 544	48 740 544
355 x 280	-	-	29 740 546	48 740 546
355 x 315	-	-	29 740 547	48 740 547
400 x 180	-	-	29 740 560	48 740 560
400 x 250	-	-	29 740 563	48 740 563
400 x 280	-	-	29 740 564	48 740 564
400 x 315	-	-	29 740 565	48 740 565
400 x 355	-	-	29 740 566	48 740 566
450 x 250	-	-	29 740 573	48 740 573
450 x 280	-	-	29 740 584	48 740 584
450 x 315	-	-	29 740 574	48 740 574
450 x 355	-	-	29 740 575	48 740 575
450 x 400	-	-	29 740 576	48 740 576
500 x 355	-	-	29 740 579	48 740 579
500 x 400	-	-	29 740 580	48 740 580
500 x 450	-	-	29 740 581	48 740 581
560 x 450	-	-	29 740 586	48 740 586
560 x 500	-	-	29 740 594	48 740 594
630 x 500	-	-	29 740 599	48 740 599
630 x 560	-	-	29 740 595	48 740 595

Note: Replace XX with colour required: 29 = Yellow PE80 / Black PE100RC 58 = Yellow PE80 48 = Orange PE100

Gas



90° ELBOWS

Size (mm)	SDR 11 Code	SDR 17.6 Code	SDR 21 Code	SDR 11 Code
90	58 309 313	58 308 313	-	48 309 313
125	58 309 315	58 308 315	-	48 309 315
180	58 309 318	58 308 318	-	48 309 318
250	-	-	29 743 321	48 309 321
280	-	-	29 743 322	48 309 322
315	-	-	29 743 323	48 309 323

45° ELBOWS

Size (mm)	SDR 11 Code	SDR 17.6 Code	SDR 21 Code	SDR 11 Code
90	58 315 313	58 314 313	-	48 315 313
125	58 315 315	58 314 315	-	48 315 315
180	58 315 318	58 314 318	-	48 315 318
250	-	-	29 744 321	48 315 321
280	-	-	29 744 322	48 315 322
315	-	-	29 744 323	48 315 323

EQUAL TEES

Size (mm)	SDR 11 Code	SDR 17.6 Code	SDR 21 Code	SDR 11 Code
90	58 321 313	58 320 313	-	48 321 313
125	58 321 315	58 320 315	-	48 321 315
180	58 321 318	58 320 318	-	48 321 318
250	-	-	29 741 321	48 321 321
280	-	-	29 741 322	48 321 322
315	-	-	29 741 323	48 321 323

Note: Replace XX with colour required: Black = 40 Blue = 41

Fabricated fittings

For low and intermediate pressure gas applications

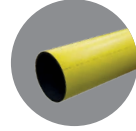


REDUCED BRANCH TEES

Size (mm)	SDR 11 Code	SDR 17.6 Code	SDR 21 Code	SDR 11 Code
125 x 90	58 347 315	58 356 315	-	48 347 315
180 x 90	58 347 318	58 356 318	-	48 347 318
250 x 90	-	-	29 797 321	48 347 321
280 x 90	-	-	29 797 322	48 347 322
315 x 90	-	-	29 797 323	48 347 323
355 x 90	-	-	29 797 324	48 347 324
400 x 90	-	-	29 797 325	48 347 325
180 x 125	58 348 318	58 357 318	-	48 348 318
200 x 125	58 348 319	58 357 319	-	48 348 319
225 x 125	58 348 320	58 357 320	-	48 348 320
250 x 125	-	-	29 798 321	48 348 321
280 x 125	-	-	29 798 322	48 348 322
315 x 125	-	-	29 798 323	48 348 323
355 x 125	-	-	29 798 324	48 348 324
400 x 125	-	-	29 798 325	48 348 325
225 x 180	-	58 358 320	-	48 349 320
250 x 180	-	-	29 799 321	48 349 321
280 x 180	-	-	29 799 322	48 349 322
315 x 180	-	-	29 799 323	48 349 323
355 x 180	-	-	29 799 324	48 349 324
400 x 180	-	-	29 799 325	48 349 325
315 x 250	-	-	29 796 323	48 335 323
355 x 250	-	-	29 796 324	48 335 324
400 x 250	-	-	29 796 325	48 335 325

Note: Replace XX with colour required: 29 = Yellow PE80 / Black PE100RC 58 = Yellow PE80 48 = Orange PE100

Gas



STUB FLANGE ASSEMBLIES

Size (mm)	SDR 11 Code	SDR 17.6 Code	SDR 21 Code
63 x 50 PN16	58 327 311	-	-
90 x 80 PN16	58 327 313	58 326 313	-
125 x 100 PN16	58 327 315	58 326 315	-
125 x 150 PN16	58 327 505	-	-
180 x 150 PN16	58 327 318	58 326 318	-
250 x 250 PN16	58 327 321	-	29 742 321
280 x 250 PN16	-	-	29 742 322
315 x 300 PN16	58 327 323	-	29 742 323
355 x 350 PN16	-	-	29 742 324
400 x 400 PN16	-	-	29 742 325
450 x 450 PN16	-	-	29 742 326
500 x 500 PN16	-	-	29 742 327
560 x 600 PN16	-	-	29 742 328
630 x 600 PN16	-	-	29 742 329
710 x 700 PN16	-	-	29 742 330
800 x 800 PN16	-	-	29 742 332

SLIMFLANGE ASSEMBLIES

Size (mm)	SDR 21 Code
250 x 200 PN16	29 487 321
315 x 250 PN16	29 487 323
355 x 300 PN16	29 487 324
400 x 350 PN16	29 487 325
450 x 400 PN16	29 487 326
500 x 450 PN16	29 487 327
560 x 500 PN16	29 487 328



Please contact customer services if special fabrications are needed

Fabricated fittings

For low and intermediate pressure gas applications



FLANGED SHORT BRANCH TEES

Size (mm)	SDR 11 Code	SDR 17.6 Code	SDR 21 Code	SDR 11 Code
90 x 80 PN16	58 341 313	58 310 313	-	48 341 313
125 x 80 PN16	58 341 315	58 310 315	-	48 341 315
180 x 80 PN16	58 341 318	58 310 318	-	48 341 318
250 x 80 PN16	-	-	29 802 321	48 341 321
280 x 80 PN16	-	-	29 802 322	48 341 322
315 x 80 PN16	-	-	29 802 323	48 341 323
125 x 100 PN16	58 342 315	58 311 315	-	48 342 315
180 x 100 PN16	58 342 318	58 311 318	-	48 342 318
250 x 100 PN16	-	-	29 803 321	48 342 321
280 x 100 PN16	-	-	29 803 322	48 342 322
315 x 100 PN16	-	-	29 803 323	48 342 323
355 x 100 PN16	-	-	29 803 324	48 342 324
180 x 150 PN16	58 343 318	58 312 318	-	48 343 318
250 x 150 PN16	-	-	29 804 321	48 343 321
315 x 150 PN16	-	-	29 804 323	48 343 323
355 x 150 PN16	-	-	29 804 324	48 343 324

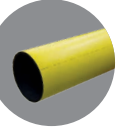
END CAPS

Size (mm)	SDR 11 Code	SDR 17.6 Code	SDR 21 Code	SDR 11 Code
90	58 332 313	58 331 313	-	48 332 313
125	58 332 315	58 331 315	-	48 332 315
180	58 332 318	58 331 318	-	48 332 318
250	-	-	29 748 321	48 332 321
280	-	-	29 748 322	48 332 322
315	-	-	29 748 323	48 332 323
355	-	-	29 748 324	48 332 324
400	-	-	29 748 325	48 332 325
450	-	-	29 748 326	48 332 326
500	-	-	29 748 327	48 332 327

Note: Replace XX with colour required: 29 = Yellow PE80 / Black PE100RC 58 = Yellow PE80 48 = Orange PE100

Please contact customer services if special fabrications are needed

Gas



LARGE DIAMETER EQUAL TEE

Size (mm)	SDR 21 Code
450	29 741 326
500	29 741 327
560	29 741 328
630	29 741 329
710	29 741 330
800	29 741 332



LARGE DIAMETER REDUCED BRANCH TEES

Size (mm)	SDR 21 Code	SDR 11 Code
450 x 180	29 799 326	48 799 326
450 x 250	29 796 326	48 796 326
450 x 315	29 795 326	48 795 326
500 x 180	29 799 327	48 799 327
500 x 250	29 796 327	48 796 327
500 x 315	29 795 327	48 795 327
630 x 180	29 799 329	48 799 329
630 x 250	29 796 329	48 796 329
630 x 315	29 795 329	48 795 329

Fabricated fittings

For low and intermediate pressure gas applications



90° MITRED ELBOWS

Size (mm)	SDR 11 Code	SDR 17.6 Code	SDR 21 Code
90	58 244 313	58 243 313	-
125	58 244 315	58 243 315	-
180	58 244 318	58 243 318	-
250	-	-	29 248 321
280	-	-	29 248 322
315	-	-	29 248 323
355	-	-	29 248 324
400	-	-	29 248 325
450	-	-	29 248 326
500	-	-	29 248 327
560	-	-	29 248 328
630	-	-	29 248 329
710	-	-	29 248 330
800	-	-	29 248 332



45° MITRED ELBOWS

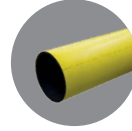
Size (mm)	SDR 11 Code	SDR 17.6 Code	SDR 21 Code
90	58 242 313	58 241 313	-
125	58 242 315	58 241 315	-
180	58 242 318	58 241 318	-
250	-	-	29 247 321
280	-	-	29 247 322
315	-	-	29 247 323
355	-	-	29 247 324
400	-	-	29 247 325
450	-	-	29 247 326
500	-	-	29 247 327
560	-	-	29 247 328
630	-	-	29 247 329
710	-	-	29 247 330
800	-	-	29 247 332



22½° MITRED ELBOWS

Size (mm)	SDR 11 Code	SDR 17.6 Code	SDR 21 Code
90	58 317 313	58 316 313	-
125	58 317 315	58 316 315	-
180	58 317 318	58 316 318	-
250	-	-	29 246 321
280	-	-	29 246 322
315	-	-	29 246 323
355	-	-	29 246 324
400	-	-	29 246 325
450	-	-	29 246 326
500	-	-	29 246 327
560	-	-	29 246 328
630	-	-	29 246 329
710	-	-	29 246 330
800	-	-	29 246 332

Gas



11¼° MITRED ELBOWS

Size (mm)	SDR 11 Code	SDR 17.6 Code	SDR 21 Code
90	58 298 313	58 297 313	-
125	58 298 315	58 297 315	-
180	58 298 318	58 297 318	-
250	-	-	29 245 321
280	-	-	29 245 322
315	-	-	29 245 323
355	-	-	29 245 324
400	-	-	29 245 325
450	-	-	29 245 326
500	-	-	29 245 327
560	-	-	29 245 328
630	-	-	29 245 329
710	-	-	29 245 330
800	-	-	29 245 332

Spigot fittings

Electrofusion or butt fusion for all applications



REDUCERS

Size (mm)	SDR 11 Code	SDR 17 Code
32 x 25	40 441 409	-
40 x 25	40 441 410	-
40 x 32	40 441 413	-
50 x 25	40 441 411	-
50 x 32	40 441 414	-
50 x 40	40 441 429	-
63 x 25	40 441 395	-
63 x 32	40 441 415	-
63 x 40	40 441 430	-
63 x 50	40 441 444	-
75 x 32	40 441 416	-
75 x 40	40 441 431	-
75 x 50	40 441 445	-
75 x 63	40 441 458	40 440 445
90 x 50	40 441 446	40 440 446
90 x 63	40 441 459	40 440 459
90 x 75	40 441 471	40 440 471
110 x 50	40 441 447	40 440 447
110 x 63	40 441 460	40 440 460
110 x 75	40 441 472	40 440 472
110 x 90	40 441 483	40 440 483
125 x 63	40 441 461	40 440 461
125 x 75	40 441 473	40 440 473
125 x 90	40 441 484	40 440 484
125 x 110	40 441 493	40 440 493
140 x 90	40 441 485	40 440 485

Size (mm)	SDR 11 Code	SDR 17 Code
140 x 110	40 441 494	40 440 494
140 x 125	40 441 503	40 440 503
160 x 90	40 441 486	40 440 486
160 x 110	40 441 495	40 440 495
160 x 125	40 441 504	40 440 504
160 x 140	40 441 512	40 440 512
180 x 125	40 441 505	40 440 505
180 x 140	40 441 513	40 440 513
180 x 160	40 441 520	40 440 520
200 x 140	40 441 514	40 440 514
200 x 160	40 441 521	40 440 521
200 x 180	40 441 527	40 440 527
225 x 160	40 441 522	40 440 522
225 x 180	40 441 528	40 440 528
225 x 200	40 441 533	40 440 533
250 x 180	40 441 529	40 440 529
250 x 200	40 441 534	40 440 534
250 x 225	40 441 538	40 440 538
280 x 200	40 441 535	40 440 535
280 x 225	40 441 539	40 440 539
280 x 250	40 441 542	40 440 542
315 x 225	40 441 540	40 440 540
315 x 250	40 441 543	40 440 543
355 x 250	40 441 544	40 440 544
355 x 280	40 441 546	40 440 546
355 x 315	40 441 547	40 440 547



90° ELBOWS

Size (mm)	SDR 11 Code	SDR 17 Code
32	40 209 308	-
50	40 209 310	-
63	40 209 311	-
75	40 210 312	40 208 312
90	40 210 313	40 208 313
110	40 210 314	40 208 314
125	40 210 315	40 208 315
140	40 210 316	40 208 316
160	40 210 317	40 208 317
180	40 210 318	40 208 318
200	40 210 319	40 208 319
225	40 210 320	40 208 320
250	40 210 321	40 208 321
280	40 210 322	40 208 322
315	40 210 323	40 208 323



FULL FACED FLANGES

Size (mm)	SDR	Product Code
63 x 50 PN16	11	FL 615 417
90 x 80 PN16	11	FL 615 418
110 x 100 PN16	11	FL 615 419
125 x 100 PN16	11	FL 615 605
160 x 150 PN16	11	FL 615 421
180 x 150 PN16	11	FL 615 927
225 x 200 PN16	11	FL 615 607



45° ELBOWS

Size (mm)	SDR 11 Code	SDR 17 Code
32	40 215 308	-
50	40 215 310	-
63	40 215 311	-
75	40 216 312	40 214 312
90	40 216 313	40 214 313
110	40 216 314	40 214 314
125	40 216 315	40 214 315
140	40 216 316	40 214 316
160	40 216 317	40 214 317
180	40 216 318	40 214 318
200	40 216 319	40 214 319
225	40 216 320	40 214 320
250	40 216 321	40 214 321
280	40 216 322	40 214 322
315	40 216 323	40 214 323



FULL FACED REDUCED FLANGES

Size (mm)	SDR	Product Code
110 x 80 PN16	11	FL 616 065
160 x 100 PN16	11	FL 616 241

Sizes below 90mm are Electrofusion only.

Spigot fittings

Electrofusion or butt fusion for all applications



90° EQUAL TEES

Size (mm)	SDR 11 Code	SDR 17 Code
63	40 221 311	-
75	40 222 312	40 220 312
90	40 222 313	40 220 313
110	40 222 314	40 220 314
125	40 222 315	40 220 315
140	40 222 316	40 220 316
160	40 222 317	40 220 317
180	40 222 318	40 220 318
200	40 222 319	40 220 319
225	40 222 320	40 220 320
250	40 222 321	40 220 321
280	40 222 322	40 220 322
315	40 222 323	40 220 323



STUB FLANGES

Size (mm)	SDR 11 Code	SDR 17 Code
32	40 227 308	-
40	40 227 309	-
50	40 227 310	-
63	40 227 311	-
75	40 228 312	40 226 312
90	40 228 313	40 226 313
110	40 228 314	40 226 314
125	40 228 315	40 226 315
140	40 228 316	40 226 316
160	40 228 317	40 226 317
180	40 228 318	40 226 318
200	40 228 319	40 226 319
225	40 228 320	40 226 320
250	40 228 321	40 226 321
280	40 228 322	40 226 322
315	40 228 323	40 226 323
355	40 228 324	40 226 324



REDUCERS BRANCH TEES

Size (mm)	SDR 11 Code	SDR 17 Code
63 x 32	40 378 415	-
63 x 50	40 378 444	-
75 x 32	40 378 416	-
75 x 50	40 378 372	-
75 x 63	40 378 445	-
90 x 50	40 378 446	40 377 446
90 x 63	40 378 459	40 377 459
90 x 75	40 378 471	40 377 471
110 x 63	40 378 460	40 377 460
110 x 75	40 378 472	40 377 472
110 x 90	40 378 483	40 377 483
125 x 90	40 378 484	40 377 484
125 x 110	40 378 493	40 377 493
140 x 63	40 378 462	40 377 462
140 x 75	40 378 474	40 377 474
140 x 90	40 378 485	40 377 485
140 x 110	40 378 494	40 377 494
160 x 63	40 378 463	40 377 463
160 x 75	40 378 475	40 377 475
160 x 90	40 378 486	40 377 486
160 x 110	40 378 495	40 377 495
180 x 90	40 378 487	40 377 487
180 x 110	40 378 496	40 377 496
180 x 125	40 378 505	40 377 505

Sizes below 90mm are Electrofusion only.

Spigot fittings

Electrofusion or butt fusion for all applications



90° FORMED BENDS

Size (mm)	SDR 11 Code	SDR 17 Code
90	40 371 313	40 370 313
110	40 371 314	40 370 314
125	40 371 315	40 370 315
160	40 371 317	40 370 317
180	40 371 318	40 370 318
200	40 371 319	40 370 319
225	40 371 320	40 370 320
250	40 371 321	40 370 321
315	40 371 323	40 370 323
355	40 371 324	40 370 324
400	40 371 325	40 370 325
450	40 371 326	40 370 326
500	40 371 327	40 370 327
560	40 371 328	40 370 328
630	40 371 329	40 370 329



45° FORMED BENDS

Size (mm)	SDR 11 Code	SDR 17 Code
90	40 376 313	40 375 313
110	40 376 314	40 375 314
125	40 376 315	40 375 315
160	40 376 317	40 375 317
180	40 376 318	40 375 318
200	40 376 319	40 375 319
225	40 376 320	40 375 320
250	40 376 321	40 375 321
315	40 376 323	40 375 323
355	40 376 324	40 375 324
400	40 376 325	40 375 325
450	40 376 326	40 375 326
500	40 376 327	40 375 327
560	40 376 328	40 375 328
630	40 376 329	40 375 329



22½° FORMED BENDS

Size (mm)	SDR 11 Code	SDR 17 Code
90	40 381 313	40 380 313
110	40 381 314	40 380 314
125	40 381 315	40 380 315
160	40 381 317	40 380 317
180	40 381 318	40 380 318
200	40 381 319	40 380 319
225	40 381 320	40 380 320
250	40 381 321	40 380 321
315	40 381 323	40 380 323
355	40 381 324	40 380 324
400	40 381 325	40 380 325
450	40 381 326	40 380 326
500	40 381 327	40 380 327
560	40 381 328	40 380 328
630	40 381 329	40 380 329



11¼° FORMED BENDS

Size (mm)	SDR 11 Code	SDR 17 Code
90	40 373 313	40 372 313
110	40 373 314	40 372 314
125	40 373 315	40 372 315
160	40 373 317	40 372 317
180	40 373 318	40 372 318
200	40 373 319	40 372 319
225	40 373 320	40 372 320
250	40 373 321	40 372 321
315	40 373 323	40 372 323
355	40 373 324	40 372 324
400	40 373 325	40 372 325
450	40 373 326	40 372 326
500	40 373 327	40 372 327
560	40 373 328	40 372 328
630	40 373 329	40 372 329

Spigot fittings

Electrofusion or butt fusion for all applications



FLANGED BRANCH TEES

Size (mm)	SDR 11 Code	SDR 17 Code
63 x 50 PN16	40 350 311	-
90 x 80 PN16	40 351 313	40 363 313
110 x 80 PN16	40 351 314	40 363 314
125 x 80 PN16	40 351 315	40 363 315
160 x 80 PN16	40 351 317	40 363 317
180 x 80 PN16	40 351 318	40 363 318
225 x 80 PN16	40 351 320	40 363 320
250 x 80 PN16	40 351 321	40 363 321
315 x 80 PN16	40 351 323	40 363 323
90 x 100 PN16	40 352 313	40 364 313
110 x 100 PN16	40 352 314	40 364 314
125 x 100 PN16	40 352 315	40 364 315
160 x 100 PN16	40 352 317	40 364 317
180 x 100 PN16	40 352 318	40 364 318
225 x 100 PN16	40 352 320	40 364 320
250 x 100 PN16	40 352 321	40 364 321
315 x 100 PN16	40 352 323	40 364 323
180 x 150 PN16	40 353 318	40 365 318
225 x 150 PN16	40 353 320	40 365 320
250 x 150 PN16	40 353 321	40 365 321
315 x 150 PN16	40 353 323	40 365 323

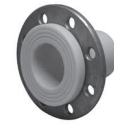


END CAPS

Size (mm)	SDR 11 Code	SDR 17 Code
20	40 233 306	-
25	40 233 307	-
32	40 233 308	-
40	40 233 309	-
50	40 233 310	-
63	40 233 311	-
75	40 234 312	-
90	40 234 313	40 232 313
110	40 234 314	40 232 314
125	40 234 315	40 232 315
140	40 234 316	40 232 316
160	40 234 317	40 232 317
180	40 234 318	40 232 318
220	40 234 319	40 232 319
225	40 234 320	40 232 320
250	40 234 321	40 232 321
280	40 234 322	40 232 322
315	40 234 323	40 232 323
355	40 234 324	40 232 324
400	40 234 325	40 232 325

Spigot fittings

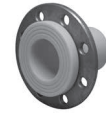
For potable water applications



STUB FLANGE ASSEMBLIES

Size (mm)	SDR 11 Code	SDR 17 Code
63 x 50 PN16	40 329 311	-
90 x 80 PN16	40 329 313	40 328 313
110 x 100 PN16	40 329 314	40 328 314
125 x 100 PN16	40 329 315	40 328 315
160 x 150 PN16	40 329 317	40 328 317
180 x 150 PN16	40 329 318	40 328 318
225 x 200 PN16	40 329 320	40 328 320
250 x 250 PN16	40 329 321	40 328 321
315 x 300 PN16	40 329 323	40 328 323

Sizes below 90mm are Electrofusion only.



For low and intermediate pressure gas applications

STUB FLANGE ASSEMBLIES

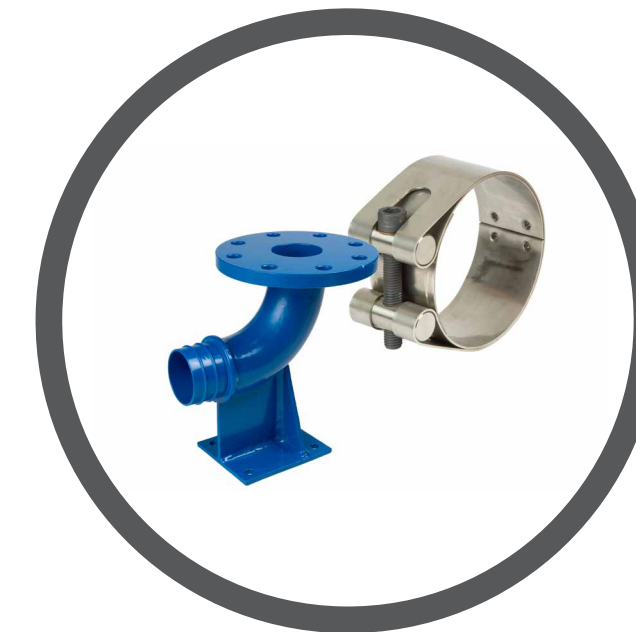
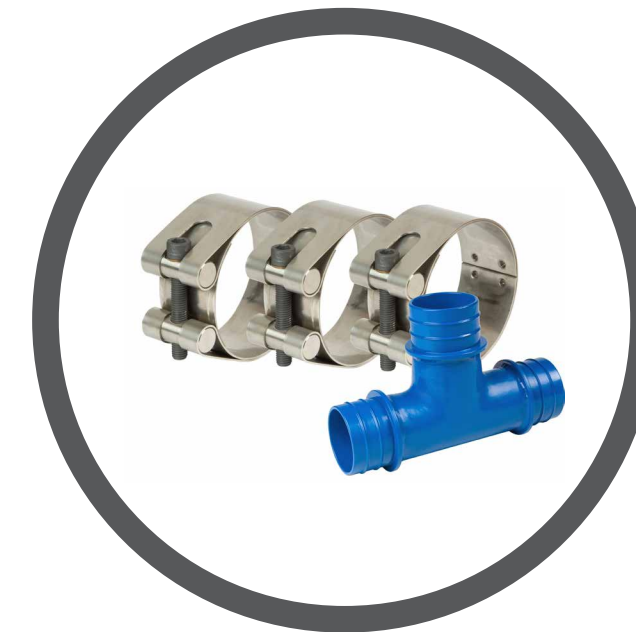
Size (mm)	SDR 11 Code	SDR 17 Code
63 x 50 PN16	40 334 311	-
90 x 80 PN16	40 334 313	40 333 313
125 x 100 PN16	40 334 315	40 333 315
180 x 150 PN16	40 334 318	40 333 318

we
make
life
flow



Mechanical fittings for potable water

*These fitting are for use on standard GPS blue pipe, and are sized differently to the Protecta-Line version on page 25



Mechanical fittings

For potable water applications



COUPLERS

Size (mm)	SDR	Product Code
63	11	SM 110 311
	11	SM 100 313
90	17	SM 109 313
	11	SM 100 314
	17	SM 109 314
110	11	SM 100 315
	17	SM 109 315
125	11	SM 100 317
	17	SM 109 317
160	11	SM 100 318
	17	SM 109 318



45° ELBOWS

Size (mm)	SDR	Product Code
63	11	SM 215 311
	11	SM 216 313
90	17	SM 214 313
	11	SM 216 314
	17	SM 214 314
110	11	SM 216 315
	17	SM 214 315
125	11	SM 216 317
	17	SM 214 317
160	11	SM 216 318
	17	SM 214 318



REPAIR COUPLERS

Size (mm)	SDR	Product Code
63	11	SM 246 311
	11	SM 246 313
90	17	SM 245 313
	11	SM 246 314
	17	SM 245 314
110	11	SM 246 315
	17	SM 245 315
125	11	SM 246 317
	17	SM 245 317
160	11	SM 246 318
	17	SM 245 318



EQUAL TEES

Size (mm)	SDR	Product Code
63	11	SM 221 311
	11	SM 222 313
90	17	SM 220 313
	11	SM 222 314
	17	SM 220 314
110	11	SM 222 315
	17	SM 220 315
125	11	SM 222 317
	17	SM 220 317
160	11	SM 222 318
	17	SM 220 318



REDUCERS

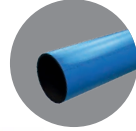
Size (mm)	SDR	Product Code
90 x 63	11	SM 441 459
	11	SM 441 483
110 x 90	17	SM 440 483
	11	SM 441 493
	17	SM 440 493
125 x 110	11	SM 441 504
	17	SM 440 504
160 x 125	17	SM 440 504
180 x 125	17	SM 440 505



FLANGED BRANCH TEES

Size (mm)	SDR	Product Code
90 x DN80	11	SM 351 313
	17	SM 363 313
110 x DN80	11	SM 351 314
	17	SM 363 314
125 x DN80	17	SM 363 315
160 x DN80	17	SM 363 317
180 x DN80	17	SM 363 318
90 x DN100	11	SM 352 313
	17	SM 364 313
110 x DN100	11	SM 352 314
	17	SM 364 314
125 x DN100	17	SM 364 315
160 x DN100	17	SM 364 317
180 x DN100	17	SM 364 318
160 x DN150	17	SM 365 317
180 x DN150	17	SM 365 318

Water



90° ELBOWS

Size (mm)	SDR	Product Code
63	11	SM 209 311
	11	SM 210 313
90	17	SM 208 313
	11	SM 210 314
	17	SM 208 314
110	11	SM 210 315
	17	SM 208 315
125	11	SM 210 317
	17	SM 208 317
160	11	SM 210 318
	17	SM 208 318



STUB FLANGE ADAPTORS

Size (mm)	SDR	Product Code
63 x DN50	11	SM 227 311
63 x DN80	11	SM 228 311
90 x DN80	11	SM 228 313
	17	SM 226 313
110 x DN100	11	SM 228 314
	17	SM 226 314
125 x DN100	11	SM 228 315
	17	SM 226 315
160 x DN150	11	SM 228 317
	17	SM 226 317
180 x DN150	11	SM 228 318
	17	SM 226 318

Mechanical fittings

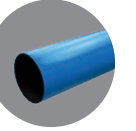
For potable water applications



DUCK FOOT BENDS

Size (mm)	SDR	Product Code
63 x DN80	11	SM 384 459
	11	SM 384 313
90 x DN80	17	SM 385 313
	11	SM 384 483
	17	SM 385 483
110 x DN80	11	SM 384 484
	17	SM 385 484
125 x DN80	17	SM 385 486
160 x DN80	17	SM 385 486
180 x DN80	17	SM 385 487

Water



Adjusta™ boundary box



Adjusta™ boundary box

Contaminated land / Rigid / Adjusta box



CONTAMINATED LAND BOX (SEALED)

Part no.	Height (mm)		Lid	Tether	Base	Other
	Min	Max				
LUBA0007	650	870	None	None	Standard	-
LUBA1000	650	870	Water	Tether	Standard	-
LUBA1039	695	985	Water	None	Standard	-
LUBA1043	650	870	None	None	Standard	-
LUBA1048	650	940	Water	None	Standard	Tethered surface box assembly



ADJUSTA BRASS MANIFOLD (UNSEALED)

Part no.	Height (mm)		Lid	Tether	Base	Other
	Min	Max				
LUBA1052	580	790	None	None	Standard	-
LUBA1068	580	790	Water	None	Standard	-
LUBA1075	580	860	Water	None	Drain	Tethered surface box assembly



RIGID BRASS MANIFOLD (UNSEALED)

Part no.	Height fixed (mm)	Lid	Tether	Base
LUBA1066	682	None	None	Standard



RIGID BOX (TAILS)

Part no.	Height fixed (mm)		Lid	Tether	Base
	Min	Max			
LUBA0012	682	870	None	None	Standard
LUBA0089	868	985	None	None	Standard



RIGID PUSH FIT BOX

Part no.	Height fixed (mm)		Lid	Tether	Base	Other
	Min	Max				
LUBA0109	682	870	None	None	Standard	-
LUBA1041	752	940	Water	Water	Standard	Surface box assembly



ADJUSTA GUARD TUBE ASSEMBLY

Part no.	Height fixed (mm)	Lid	Base
LUBA1022	650	None	Split Base BM1017
LUBA1024	593	None	BM1017



ADJUSTA BOUNDARY BOX (TAILS)

Part no.	Height (mm)		Lid	Tether	Base	Other
	Min	Max				
LUBA0045	580	790	None	None	Standard	-
LUBA0092	440	590	None	None	Standard	Mini Adjusta
LUBA1001	440	590	Water	Tether	Drain	Mini Adjusta
LUBA1002	580	790	Water	Tether	Drain	-
LUBA1006	580	790	Water	None	Standard	-
LUBA1007	440	590	Water	None	Standard	Mini Adjusta
LUBA1047	580	860	Water	None	Drain	Tethered surface box assembly
LUBA1049	440	660	Water	Tether	Drain	Mini Adjusta + Sq Surface box



CHAMBER

Part no.	Height (mm)	Lid	Base	Other
LUBA1027	Min = 370 Max = 570	None	No fins BM0120	BA1027 + lid assembly



ADJUSTA PUSH FIT BOX

Part no.	Height (mm)		Lid	Tether	Base	Other
	Min	Max				
LUBA0099	580	790	None	None	Standard	25mm elbow
LUBA0100	580	790	Water	Tether	Standard	20mm elbow
LUBA1028	440	590	Water	None	Standard	Mini Adjusta
LUBA1037	580	860	Water	Tether	Drain	Surface box assembly
LUBA1038	440	660	Water	None	Drain	Mini Adjusta/surface box assembly
LUBA1040	580	790	Water	Tether	Standard	-
LUBA1044	440	590	Water	None	Standard	Mini Adjusta
LUBA1045	580	790	Water	None	Standard	-
LUBA1082	580	790	Water	Tether	-	Outlet tail



ADJUSTA ACCESSORIES

Part no.	Height (mm)	Lid	Tether	Other
LUBA1035	Min = 370 Max = 570	Water	Tether	Top Section Only
LUBA1071	Fixed = 440	Water	Tether	Top Section Only/
LUBA1081	Fixed = 440	Water/No keyhole	Tether	Tethered surface box assembly Adjusta Tube/Tethered surface box assembly
LUBA1080	Fixed = 280	Water	Tether	Tethered surface box assembly

Adjusta™ boundary box

Miscellaneous



SQUARE COWL

Part no.	LUBA1073
----------	----------



SURFACE BOX

Part no.	Lid	Tether	Other
LUBA0043	None	None	-
LUBA0056	Water	None	Lid/Plate assembly with keyhole
LUBA0115	Water	None	Location plate with keyhole
LUBA1036	Water	Tether	Lid/Plate assembly with keyhole



SLOPE ADJUSTA

Part no.	LUBA0018
----------	----------



CORRUGATED GUARD TUBE ASSEMBLY

Part no.	LUBA0039
----------	----------



MANIFOLD ASSEMBLY

Part no.	LUBA0016
	LUBA1067



TAP ASSEMBLY

Part no.	LUBA0036
----------	----------



BLANKING CAP + O-RING

Part no.	LUBA0037
----------	----------



MANIFOLD PLUG NO FLOW KIT

Part no.	LUBA0046
----------	----------



MANIFOLD PLUG & O-RING KIT

Part no.	LUBA0047
----------	----------



MANIFOLD PLUG TRICKLE FLOW KIT

Part no.	LUBA0048
----------	----------



NRV ASSEMBLY

Part no.	LUBA0084
----------	----------



DCV ASSEMBLY

Part no.	LUBA1076
----------	----------



ADJUSTA BOX FROST PLUG (185mm)

Part no.	LUBM0123
----------	----------



RIGID BOX FROST PLUG (195mm)

Part no.	LUBM0055
----------	----------



LID LIFTING TOOL FOR KEYHOLE

Part no.	LUBM1004
----------	----------



ADJUSTA LID LIFTING TOOL NONE KEYHOLE

Part no.	LUBM1036
----------	----------



PUSH FIT CONNECTOR TOOL

Part no.	LUBM1003
----------	----------



HEIGHT ADJUSTMENT TOOL

Part no.	LUBM0093
----------	----------



OUTER SLEEVE ASSY TOOL

Part no.	LUBM1058
----------	----------



NUT TOOL STOP TAP

Part no.	LUBM1059
----------	----------

Protecta-Line Adjusta™ boundary box

Boundary boxes/Lids as separate accessories/Accessories



PROTECTA-LINE ADJUSTA BOUNDARY BOX

Part no.	Height (mm)		Lid	Tether	Base	Type
	Min	Max				
LUBA001P	570	790	Water	None	Standard	Standard
LUBA002P	660	870	Water	None	Standard	Slope
LUBA003P	570	790	Water	None	Standard	Square cowl
LUBA004P	640	855	Water	Tether	Standard	Surface box



SLOPE ADJUSTA

Part no.

LUBA0018



SQUARE COWL

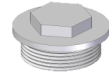
Part no.

LUBA1073



SURFACE BOX

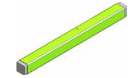
Part no.	Lid	Tether	Other
LUBA0043	None	None	-
LUBA0056	Water	None	Lid/Plate assembly with keyhole
LUBA0115	Water	None	Location plate with keyhole
LUBA1036	Water	Tether	Lid/Plate assembly with keyhole



BLANKING CAP + O-RING

Part no.

LUBA0037



HEIGHT ADJUSTMENT TOOL

Part no.

LUBM0093



ADJUSTA BOX FROST PLUG (185mm)

Part no.

LUBM0123



LID LIFTING TOOL FOR KEYHOLE

Part no.

LUBM1004



ADJUSTA LID LIFTING TOOL NONE KEYHOLE

Part no.

LUBM1036

Aliaxis UK reserves the right to modify the details in this publication as products and specifications are updated and improved.

The content of this publication is for general information only and it is user's responsibility to determine the suitability of any product for the purpose intended.

Aliaxis UK Limited, registered in England 01698059. Registered office: Dickley Lane, Lenham, Maidstone, Kent, ME17 2DE

Aliaxis.co.uk

Distributor:

Version: V4 10.23

