

Installation instructions D100TC, D100LTC, D100LTG, D125LTG & D150BC

Important Installation must be in accordance with these instructions. Read all instructions before commencing installations.

Fans supplied with luminaire fitting must be connected to the supply earth. Light fittings should be connected to a 6 amp fused circuit. The light fitting is suitable for indoor use only. All lights must be used in conjunction with a fan, they are not designed to be used without the fan.

The electrical connections must be carried out by a qualified electrician in accordance with Part P of the Building Regulations & IEE Wiring Regulations.

- Observe appropriate safety precautions if working on steps or ladders. Wear eye protection when breaking out wall or window materials etc.
- Siting Notes: Where an open-flued oil or gas-fuelled appliance is installed in the kitchen, extract ventilation can cause the spillage of flue gases. Care must be taken to ensure ventilation is reduced appropriately, as set out in the Building Regulations. The guide to the Regulations suggests that the reduced provision should be an extract rate 20 l/s (72 m³/h) maximum. Kitchens with solid-fuel appliances should not have extract fans fitted.
- IP safety zones:
D100TC – safety zone 2,
D100LTC & D100LTG – safety zone 3.
- The fan should not be sited where it would be subject to a direct source of heat in excess of 40°C.
- When installing wall mounted fans, ensure that there are no buried cables or pipes in the way. It is

recommended that this fan is mounted 2.3m above floor level.

- A clearance of 75mm to be allowed on at least one side of the fan for the removal of the front cover.

Specification Details

D100TC

Performance: 28 l/s (99 m³/h) when installed into wall with external wall grille

Weight: 1.3kg

Electrical Specification: 230V~50Hz ⊕ 20W

D100LTG & D100LTC

Performance: 28 l/s (99 m³/h) when installed into wall with external wall grille

Weight: 1.3kg

Electrical Specification: 230V~50Hz ⊕ 20W

Light Bulb Specification: use 230V GE bulb Round or

Globe type with SES connection 40 watts
Light bulb not included.

D125LTG

Performance: 15 l/s (55 m³/h) when installed into wall with 3m duct & external grille

Weight: 2.4kg

Electrical Specification: 230V~50Hz ⊕ 23W

Light Bulb Specification: use 230V GE bulb Round or Globe type with SES connection 40, 50 or 60 watts

Light bulb not included.

D150BC

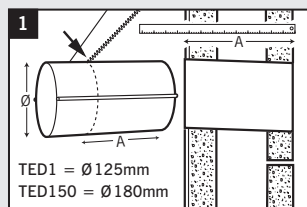
Performance: 61 l/s (220 m³/h) when installed into wall with external wall grille

Weight: 1.6kg

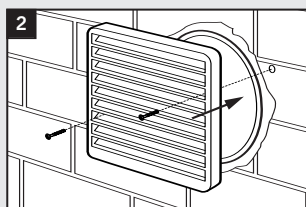
Electrical Specification: 230V~50Hz ⊕ 25W

WALL INSTALLATION – D100TC, D100LTC, D100LTG & D150BC

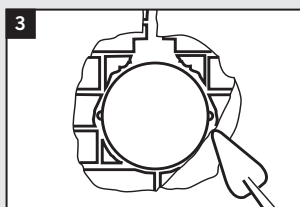
THROUGH WALL NEW INSTALLATION using TED1 or TED 150 ducting and DEG external grilles



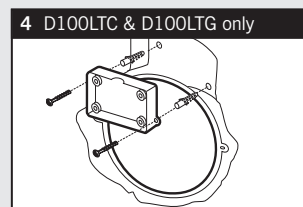
Cut the duct to width of the plasterboard or tiled wall with slight fall to exterior. (Make provisions for cable). Make appropriate hole in wall for ducting.



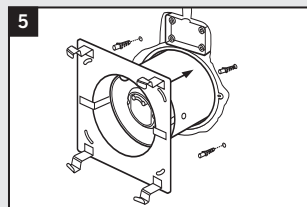
Make good external wall with mortar or foam. Screw the protective wall grille (DEG1 for 100mm fans, DEG2 for 150mm fans) over the external duct opening.



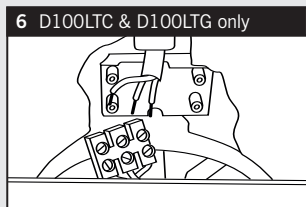
Channel a hole for recessing terminal block (D100LTC & D100LTG only). Fill in any gaps with mortar or foam and make good around ducting. Make sure that ducting remains circular and screw holes are horizontal.



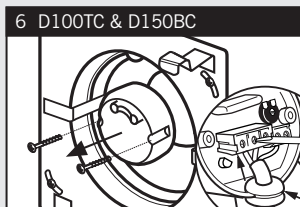
Drill holes for rawl plugs and screw terminal block into the hole cut for it.



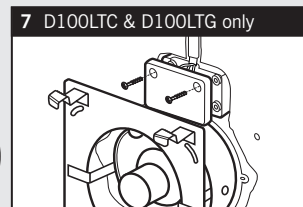
Remove tie wrap before installing fan & bracket into wall. Mark bracket screw holes, drill and plug with rawl plugs.



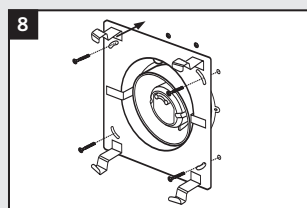
Conduit wiring from mains and wire terminal block. (See wiring details overleaf).
Note – IPX4 approval is based on using H05RN-F cable incoming supply. Electrician should ensure any other type of cable used is waterproof.



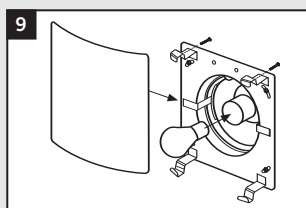
Remove wiring cover. Wire fan according to wiring diagrams overleaf. Replace wiring cover. Ensure cable is secured using cable clamp provided.



Screw on terminal block cover and make good around it.

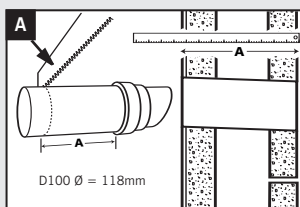


Screw the bracket to the wall using No. 8 screws provided.

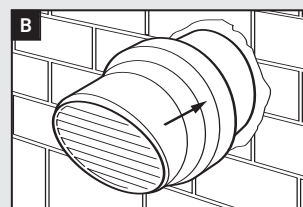


Fix bulb if required. Undo fixing screws, slide on front cover and secure front cover to bracket using screws provided.

Wall mounted using TED11 Fast Fix Ducting (D100 range only)

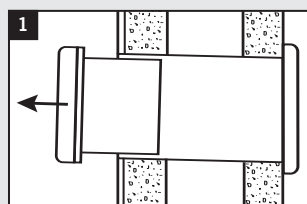


Cut the duct to equal width of the finished wall thickness with slight fall to exterior. (Make provisions for cable). Make appropriate hole in wall for ducting.

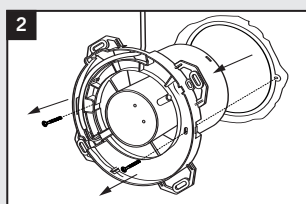


Push the duct into hole from the exterior. The external grille will automatically provide a watertight seal. Fit the fan following steps 3–9 above.

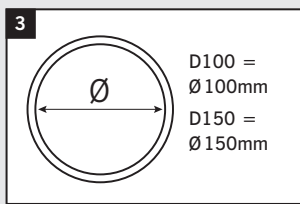
THROUGH WALL REPLACEMENT INSTALLATION



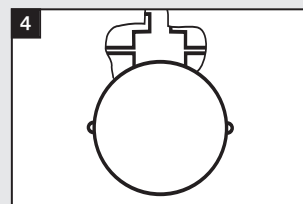
Remove old fan.



Discard old fan.

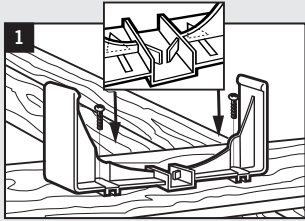


Check ducting hole dimensions.

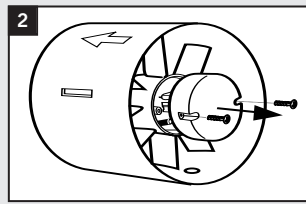


Channel a hole for recessing terminal block (D100LTC or D100LTG). Follow steps 3–9 above to complete installation.

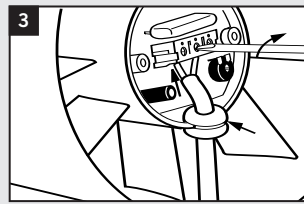
CEILING INSTALLATION – D125LTG



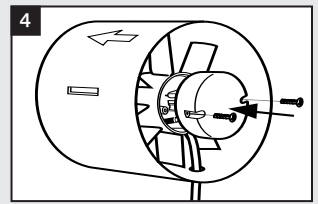
1 Secure fan holder to a joist using two No. 6 screws.



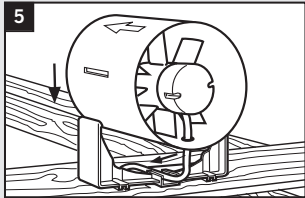
2 To wire the induct fan, first remove the wiring cover.



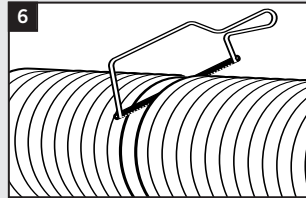
3 Wire up the fan according to the diagrams below.



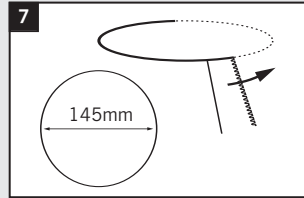
4 Secure the cover back onto the fan.



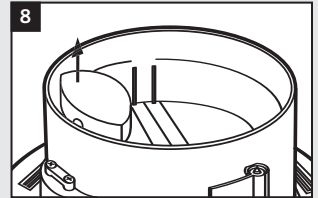
5 Clip fan into fan holder making sure it is secure.



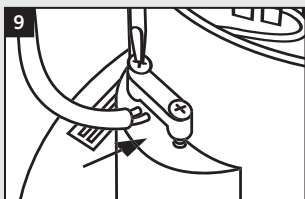
6 Cut flexiduct to the lengths required.



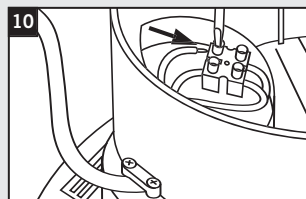
7 Cut a hole in the ceiling of the room where the light unit is to be fitted and thread through the wiring for the light unit.



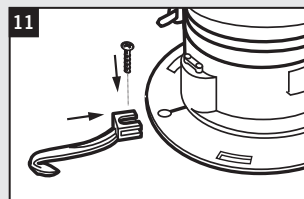
8 To wire the light unit, first remove the wiring cover.



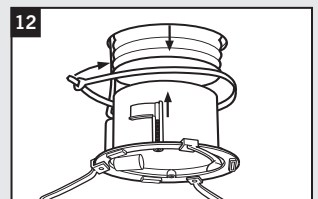
9 Loosen the securing clamp on the side of the unit and thread the cable through the hole and re-secure.



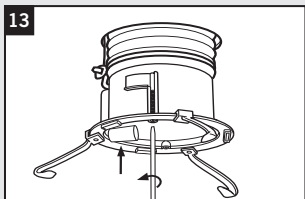
10 Wire the unit according to diagram below, replace wiring cover and secure with screw provided.



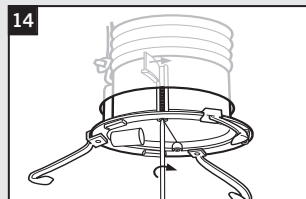
11 Attach fixing clips using pins provided. Pins can be fitted above or below the fixing clip.



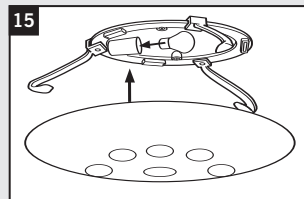
12 Push flexiduct through the ceiling and attached it to the light unit using one of the ties provided.



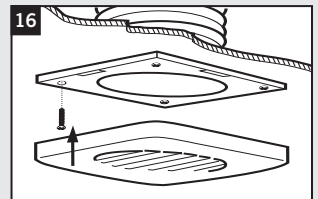
13 Use the clip fixing fingers on the unit. These are used by first slightly unscrewing the two long screws provided so that the clip fixing fingers are loose.



14 Twist the fixing fingers around so that they stick outwards. Then tighten them against the ceiling (do not overtighten).



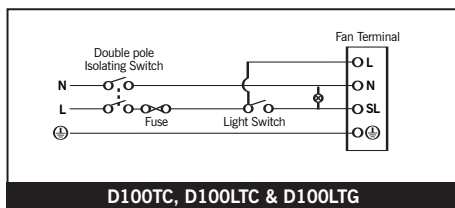
15 Put in light bulb and clip front cover grille onto the fixing clips.



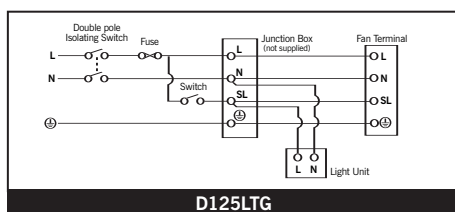
16 Prepare suitable hole through soffit or wall and fix external grille back plate using plugs and screws provided. Snap on external grille.

Wiring Diagrams

The electrical connections must be carried out by a qualified electrician in accordance with Part P of the Building Regulations & IEE Wiring Regulations.



D100TC, D100LTC & D100LTG



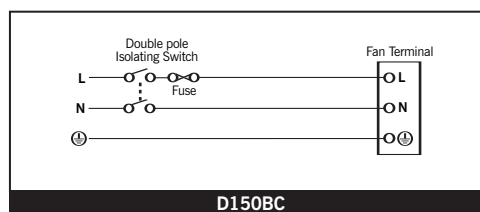
D125LTG

WARNING: Disconnect fan with double pole isolating switch before starting work.

The light fitting must be connected to the supply earth. Light fittings should be connected to a 6 amp fused circuit. The light fitting is suitable for indoor use only. All lights must be used in conjunction with a fan, they are not designed to be used without the fan.

WIRING DIAGRAM KEY

- L = Permanent live
- N = Neutral
- SL = Switch live, from remote/light switch
- ⊕ = Earth



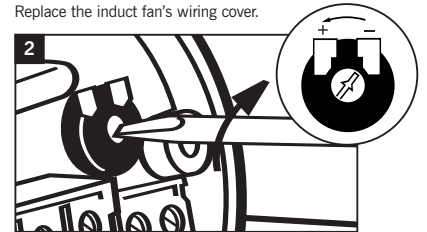
D150BC

Adjusting the Timer

First remove the wiring cover on the induct fan (fig 1).

Adjust timer (see fig. 2). The timer is adjustable between 1 & 30 minutes. It is factory set at midpoint.

Replace the induct fan's wiring cover.



Cleaning

Always isolate fan before cleaning.

Chrome Front Cover

Clean cover with a soft dry cloth. Do not use abrasive materials.

Glass Front Cover

Remove and wash in warm water or use a damp cloth. Do not use abrasive materials.

The Guarantee Period

This Greenwood product (D100TC, D100LTC, D100LTG, D125LTG & D150BC) is guaranteed for a period of 3 years from the date of purchase of the Product against fault in manufacture. In case of such fault in manufacture apparent during the Guarantee Period, Greenwood may, at its absolute discretion, repair the product, replace the product free of charge or refund the cost of the product AS LONG AS AND ONLY IF:

1. The Product is returned to Greenwood within the Guarantee Period with evidence of purchase date;
2. The Product has not been misused or handled carelessly or used on an inappropriate voltage supply;
3. Repairs have not been attempted other than by Greenwood's service staff or authorised dealers; and
4. In Greenwood's sole discretion, the Product is found to be faulty. If it were not found to be faulty, the Product would be available for collection from the relevant Greenwood's premises within one calendar month and if it was not collected, it would be subsequently delivered by Greenwood and a delivery charge will be made. (the guarantee)

This guarantee does not confer any rights other than those expressly set out above and does not cover any claims for consequential loss, damage or any costs incurred in the replacement of the faulty Product. This Guarantee is offered as an extra benefit and does not affect your statutory right as a consumer.

Greenwood Air Management Ltd, Brookside Industrial Estate, Rustington, West Sussex BN16 3LH.

Tel: (01903) 777136 Fax: (01903) 782398 Web: www.greenwood.co.uk Email: info@greenwood.co.uk

